



LED LIGHTING & ELECTRICAL

2025-26

CATALOGUE

PREMIUM RANGE OF LED LIGHTING

RESIDENTIAL
LED LIGHTING

COMMERCIAL
LED LIGHTING

STRIP/ROPE
LED LIGHTING
CHANNELS
& DRIVERS

LANDSCAPE
LED LIGHTING

LED TRACK
LIGHTING

EMERGENCY
LIGHTING

METALLIC/
NON-METALLIC
BOXES

WIRING DEVICES
& ACCESSORIES

SMOKE ALARMS
HEATERS
BATH FANS
AND EV CHARGER

LED MIRRORS
LIGHT BULBS
MOUNTING
BRACKETS

PROGRAMMABLE
LED OUTDOOR
LIGHTS

TOOLS &
ACCESSORIES
HAND DRYERS



VISION

To become an industry leader in designer friendly products, serving the North American LED lighting & electrical industry with multiple branches.



MISSION

Your partners in creation of beautiful spaces, providing the highest quality products with the best in industry customer service.

CONTENT



RESIDENTIAL
LED LIGHTING

Page : 01 - 21

COMMERCIAL
LED LIGHTING

Page : 23 - 37

STRIP/ROPE
LED LIGHTING
CHANNELS
& DRIVERS

Page : 39 - 49

LANDSCAPE
LED LIGHTING

Page : 51 - 55

LED TRACK
LIGHTING

Page : 57 - 59

EMERGENCY
LIGHTING

Page : 60 - 61

METALLIC/
NON-METALLIC
BOXES

Page : 63 - 73

WIRING DEVICES
& ACCESSORIES

Page : 75 - 79

SMOKE ALARMS
HEATERS
BATH FANS
AND
EV CHARGER

Page : 81 - 83

LED MIRRORS
LIGHT BULBS
MOUNTING
BRACKETS

Page : 85 - 87

PROGRAMMABLE
LED OUTDOOR
LIGHTS

Page : 89 - 92

TOOLS &
ACCESSORIES
HAND DRYERS

Page : 93 - 98

2" Recessed Downlight-5CCT (Round/Square)



INTERCHANGEABLE TRIMS



*Sold Separately

INCLUDED IN BOX

2" Recess Module Downlight with interchangeable trim and Remote Driver



DLDD2R5CWH-RD	10215 WH	○
DLDD2R5CBK-RD	10215 BK	●
DLDD2R5CBN-RD	10215 BN	●

DLDD2R5CWH-SQ	10216 WH	○
DLDD2R5CBK-SQ	10216 BK	●
DLDD2R5CBN-SQ	10216 BN	●

Specifications	
Watts	8W
CRI	90Ra+
Color Temperature (K)	Field Selectable 2700K/3000K/3500K/4000K/5000K
Lumens	600Lm
Default Driver Input	AC120V, 60Hz
Dimming	Triac Dimming
Approved Location	Wet Location
Beam Angle	38°

2" Trimless Downlight 5CCT (Round)



INCLUDED IN BOX

2" Trimless Module Downlight with Remote Driver



DLDD2TR5CWH-RD	10215 TWH	○
DLDD2TR5CBK-RD	10215 TBK	●

Specifications	
Watts	15W
CRI	90Ra+
Color Temperature (K)	Field Selectable 2700K/3000K/3500K/4000K/5000K
Lumens	1000Lm
Default Driver Input	AC120V, 60Hz
Dimming	Triac Dimming
Approved Location	Wet Location
Beam Angle	38°

3" Recessed Slim Panel-3CCT (Round)



Decorative Trim Ring



*Sold Separately

DLDD33CWH-RD	10315 WH	○
DLDD33CBK-RD	10315 BK	●
DLDD33CBN-RD	10315 BN	●

Specifications	
Watts	8W
CRI	90Ra+
Color Temperature (K)	3-color Field Selectable CCT 3000K/4000K/5000K
Lumens	500Lm
Default Driver Input	AC120V, 60Hz
Dimming	Triac Dimming
Approved Location	Wet Location
Beam Angle	120°



RECESSED/DOWN LIGHT



3" Recessed Gimbal Downlight-5CCT (Round/Square)



INCLUDED IN BOX
3" 6W Round/Square
Gimbal Downlight with
Remote Driver



DLDD3G5CWH-RD	10315 GWH	○
DLDD3G5CBK-RD	10315 GBK	●
DLDD3G5CBN-RD	10315 GBN	●

DLDD3G5CWH-SQ	10316 GWH	○
DLDD3G5CBK-SQ	10316 GBK	●

Specifications	
Watts	6W
CRI	90Ra+
Color Temperature (K)	Field Selectable 2700K/3000K/3500K/4000K/5000K
Lumens	500Lm
Default Driver Input	AC120V, 60Hz
Dimming	Triac Dimming
Approved Location	Wet Location
Beam Angle	38°



3.5" Recessed Downlight-5CCT (Round/Square)

INTERCHANGEABLE TRIMS



*Sold Separately

INCLUDED IN BOX
3.5" Recess Module and Remote Driver



DLDD35R5CWH-RD	10355 WH	○
DLDD35R5CBK-RD	10355 BK	●

DLDD35R5CWH-SQ	10356 WH	○
DLDD35R5CBK-SQ	10356 BK	●

Specifications	
Watts	15W
CRI	90Ra+
Color Temperature (K)	Field Selectable 2700K/3000K/3500K/4000K/5000K
Lumens	1000Lm
Default Driver Input	AC120V, 60Hz
Dimming	Triac Dimming
Approved Location	Wet Location
Beam Angle	38°

3.5" Recessed Gimbal Downlight-5CCT (Round/Square)



DLDD35RG5CWH-RD	10355 GWH	○
DLDD35RG5CBK-RD	10355 GBK	●

DLDD35RG5CWH-SQ	10356 GWH	○
DLDD35RG5CBK-SQ	10356 GBK	●

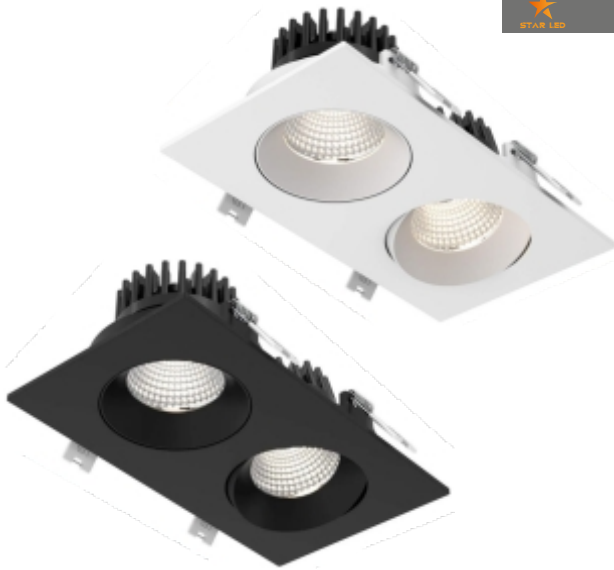
Specifications	
Watts	12W
CRI	90Ra+ or 80Ra
Color Temperature (K)	Field Selectable 2700K/3000K/3500K/4000K/5000K
Lumens	800Lm
Default Driver Input	AC120V, 60Hz
Dimming	Triac Dimming
Approved Location	Wet Location
Beam Angle	38°





STAR LED

RECESSED/DOWN LIGHT



3.5" Combo Downlight 2 Head-5CCT (Square)

DLDD35C2WH-SQ	10356 2WH <input type="radio"/>
DLDD35C2BK-SQ	10356 2BK <input checked="" type="radio"/>

Specifications	
Watts	24W
CRI	90Ra+
Color Temperature (K)	Field Selectable 2700K/3000K/3500K/4000K/5000K
Lumens	1600Lm
Default Driver Input	AC120V, 60Hz
Dimming	Triac Dimming
Approved Location	Wet Location
Beam Angle	40°

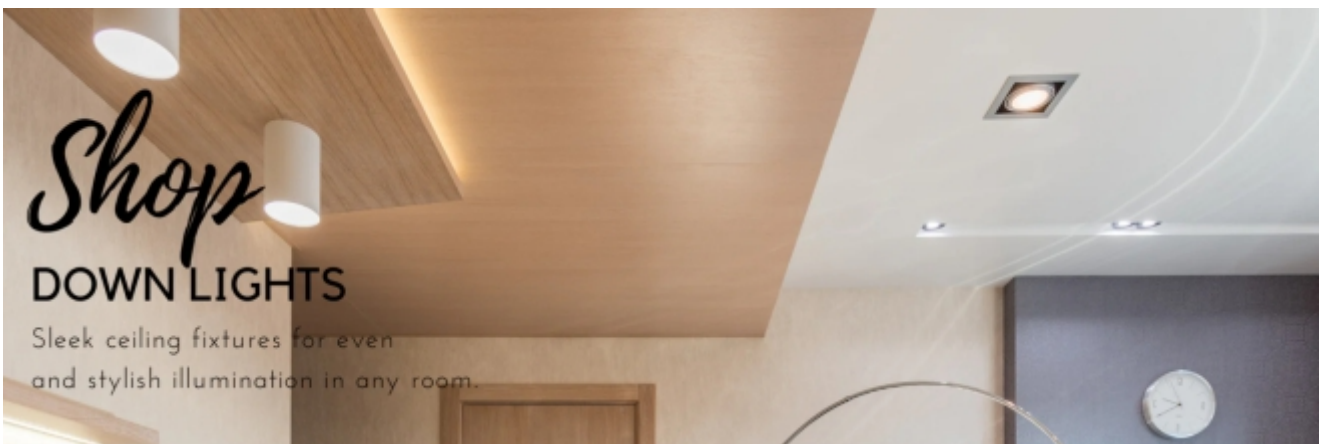


3.5" Combo Downlight 3 Head-5CCT (Square)



DLDD35C3WH-SQ	10356 3WH <input type="radio"/>
DLDD35C3BK-SQ	10356 3BK <input checked="" type="radio"/>

Specifications	
Watts	36W
CRI	90Ra+
Color Temperature (K)	Field Selectable 2700K/3000K/3500K/4000K/5000K
Lumens	2700Lm
Default Driver Input	AC120V, 60Hz
Dimming	Triac Dimming
Approved Location	Wet Location
Beam Angle	38°



RECESSED/DOWN LIGHT



4" Regressed Downlight-5CCT (Round/Square)



DLDD4R5CWH-RD	10415 RWH	<input type="radio"/>
DLDD4R5CBK-RD	10415 RBK	<input checked="" type="radio"/>
DLDD4R5CWH-SQ	10416 RWH	<input type="radio"/>
DLDD4R5CBK-SQ	10416 RBK	<input checked="" type="radio"/>

Specifications	
Watts	15W
CRI	90Ra+
Color Temperature (K)	Field Selectable 2700K/3000K/3500K/4000K/5000K
Lumens	1000Lm
Default Driver Input	AC120V, 60Hz
Dimming	Triac Dimming
Approved Location	Wet Location
Beam Angle	38°

4" Regressed Gimbal Downlight-5CCT (Round)



DLDD4RG5CWH-RD	10415 RGWH	<input type="radio"/>
DLDD4RG5CBK-RD	10415 RGBK	<input checked="" type="radio"/>

Specifications	
Watts	12W
CRI	90Ra+
Color Temperature (K)	Field Selectable 2700K/3000K/3500K/4000K/5000K
Lumens	800Lm
Default Driver Input	AC120V, 60Hz
Dimming	Triac Dimming
Approved Location	Wet Location
Beam Angle	38°

4" Slim Downlight-5CCT (Round/Square)



DLDD45CWH-RD	10415 SWH	<input type="radio"/>
DLDD45CBK-RD	10415 SBK	<input checked="" type="radio"/>
DLDD43CWH-SQ	10416 SWH	<input type="radio"/>
DLDD43CBK-SQ	10416 SBK	<input checked="" type="radio"/>

Specifications	ROUND PROFILE	SQUARE PROFILE
Watts	12W	11W
CRI	90Ra+ or 80Ra	90Ra+ or 80Ra
Color Temperature (K)	Field Selectable 2700K/3000K/3500K/4000K/5000K	3 Color Field Selectable 3000K/4000K/5000K
Lumens	900Lm	700Lm
Default Driver Input	AC120V, 60Hz	AC120V, 60Hz
Dimming	Triac Dimming	Triac Dimming
Approved Location	Wet Location	Wet Location
Beam Angle	120°	120°





RECESSED/DOWN LIGHT



4" Multi Recessed Downlight-5CCT (Round/Square)



DLMT45CWH-RD	10415 MWH	<input type="radio"/>
DLMT45CBK-RD	10415 MBK	<input checked="" type="radio"/>

DLMT45CWH-SQ	10416 MWH	<input type="radio"/>
DLMT45CBK-SQ	10416 MBK	<input checked="" type="radio"/>

Specifications	
Watts	11W
CRI	90Ra+
Color Temperature (K)	Field Selectable 2700K/3000K/3500K/4000K/5000K
Lumens	900Lm
Default Driver Input	AC120V, 60Hz
Dimming	Triac Dimming
Approved Location	Wet Location
Beam Angle	110°



4" Gimbal Downlight-5CCT (Round)

DLDD4G5CWH-RD	10415 GWH	<input type="radio"/>
DLDD4G5CBK-RD	10415 GBK	<input checked="" type="radio"/>

Specifications	
Watts	12W
CRI	90Ra+
Color Temperature (K)	Field Selectable 2700K/3000K/3500K/4000K/5000K
Lumens	900Lm
Default Driver Input	AC120V, 60Hz
Dimming	Triac Dimming
Approved Location	Wet Location
Beam Angle	38°

4" Trimless Downlight-5CCT (Round)



DLDD4TR5CWH-RD	10415 TWH	<input type="radio"/>
DLDD4TR5CBK-RD	10415 TBK	<input checked="" type="radio"/>

Specifications	
Watts	15W
CRI	90Ra+ or 80Ra
Color Temperature (K)	Field Selectable 2700K/3000K/3500K/4000K/5000K
Lumens	1000Lm
Default Driver Input	AC120V, 60Hz
Dimming	Triac Dimming
Approved Location	Wet Location
Beam Angle	38°

Excellent
Design



4" Fire Rated Recessed-5CCT (Round)



DLDD4FR5CWH-RD	10415 FWH <input type="radio"/>
----------------	---------------------------------

Specifications	
Watts	12W
CRI	90Ra+
Color Temperature (K)	Field Selectable 2700K/3000K/3500K/4000K/5000K
Lumens	900Lm
Default Driver Input	AC120V, 60Hz
Dimming	Triac Dimming
Approved Location	Wet Location
Beam Angle	120°

4" Retrofit Downlight-5CCT (Round)



DLRF45CWH-RD	10415 RFWH <input type="radio"/>
DLRF45CBK-RD	10415 RFBK <input checked="" type="radio"/>

Specifications	
Watts	14W
CRI	80Ra+
Color Temperature (K)	Field Selectable 2700K/3000K/3500K/4000K/5000K
Lumens	800Lm
Default Driver Input	AC120V, 60Hz
Dimming	Triac Dimming
Approved Location	Wet Location
Beam Angle	38°

5" Slim Downlight-5K (Round)



DLDD55KWH-RD	10515 SWH5K <input type="radio"/>
--------------	-----------------------------------

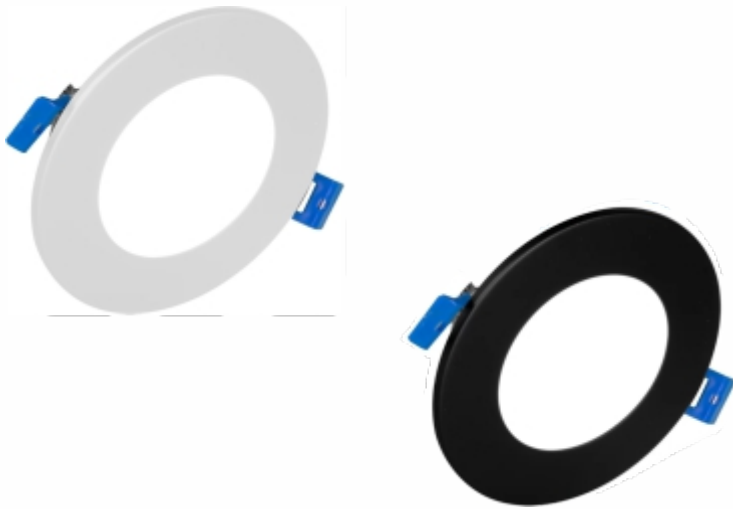
Specifications	
Watts	12W
CRI	80Ra+
Color Temperature (K)	5000K
Lumens	800Lm
Default Driver Input	AC120V, 60Hz
Dimming	Triac Dimming
Approved Location	Wet Location
Beam Angle	38°



RECESSED/DOWN LIGHT



6" Slim Downlight-5CCT (Round)



DLDD65CWH-RD	10615 SWH <input type="radio"/>
DLDD65CBK-RD	10615 SBK <input checked="" type="radio"/>

Specifications	
Watts	14W
CRI	80Ra+
Color Temperature (K)	Field Selectable 2700K/3000K/3500K/4000K/5000K
Lumens	1100Lm
Default Driver Input	AC120V, 60Hz
Dimming	Triac Dimming
Approved Location	Wet Location
Beam Angle	120°

6" Retrofit Downlight-3K/5K (Round)



DLRF63KWH-RD	10615 RFWH3K <input type="radio"/>
DLRF65KWH-RD	10615 RFWH5K <input type="radio"/>

Specifications	
Watts	14W
CRI	80Ra+
Color Temperature (K)	3000K OR 5000K
Lumens	800Lm
Default Driver Input	AC120V, 60Hz
Dimming	Triac Dimming
Approved Location	Damp Location
Beam Angle	38°

6" Fire Rated Recessed-5CCT (Round)



DLDD6FR5CWH-RD	10615 FWH <input type="radio"/>
----------------	---------------------------------

Specifications	
Watts	15W
CRI	90Ra+
Color Temperature (K)	Field Selectable 2700K/3000K/3500K/4000K/5000K
Lumens	1100Lm
Default Driver Input	AC120V, 60Hz
Dimming	Triac Dimming
Approved Location	Wet Location
Beam Angle	120°





STAR LED

SURFACE MOUNT/CEILING LIGHT



LED Slim Flush Mount Ceiling Light-3CCT

AZURE SERIES



Our unique modern AZURE Series LED Flush Mount Light is the first of its kind. The integrated Tri-Color LED technology allows the flexibility of pre-setting the color temperature and brightness based on your desired preference.

FEATURES

- Ultra Slim 2.15" design
- Tri-color 3000K / 4000K / 5000K pre-settable by installer
- Energy Saving mode pre-settable by dual wattage setup
- Fully dimmable and suitable for both leading edge and trailing edge dimmers
- Isolated integrated for constant current power supply
- Chrome finished with frosted shade is suitable for any home, office, hallway, or stairwell
- Integrated LEDs does not require a bulb

WW-Warm White
 SW-Soft White
 CW-Cool White

TRI-COLOR CONFIGURATION

AZURE Series Tri-Color LED Ceiling Light is designed for ease of use for any installer to simply pre-set the color temperature during installation. The built-in switch allows for three options :

WW/SW/CW (3000K, 4000K, 5000K)

Product	Ultra Slim LED Modern Flush Mount				
Model	17012 BK/BN	17014 BK/BN	17016 BK/BN	17020 BN	17022 BN
Dimension (in)	Ø12" x 2.16"	Ø14" x 2.16"	Ø16" x 2.16"	Ø20" x 2.16"	Ø22" x 2.16"
Inch	12"	14"	16"	20"	22"
Wattage	16W/12W	22W/16W	26W/19W	30W/21W	33W/23W
Lumens	1250Lm	1700Lm	2150Lm	2400Lm	2600Lm

BK-Black | BN-Brushed Nickel



STAR CITY SERIES

Our unique modern STAR CITY Series LED Flush Mount Light is the first of its kind. The integrated Tri-Color LED technology allows the flexibility of pre-setting the color temperature and brightness based on your desired preference.

FEATURES

- Elegant shape diffuser with star effect design
- Tri-color 3000K / 4000K / 5000K Pre-settable by installer
- Energy Saving mode pre-settable by dual wattage setup
- Fully dimmable and suitable for both leading edge and trailing edge dimmers
- Isolated integrated for constant current power supply
- The frosted shade design provides a unique star effect is perfect for any living room
- Integrated LEDs, does not require a bulb

TRI-COLOR CONFIGURATION

STAR CITY Series Tri-Color LED Ceiling Light is designed for ease of use for any installer to simply pre-set the color temperature during installation. The built-in switch allows for three options:

WW/SW/CW (3000K, 4000K, 5000K)



WW-Warm White
SW-Soft White
CW-Cool White

Available in Two Different Sizes: 16" & 22"

Product	LED Star City LED Modern Flush Mount	
Model	17116 SC	17122 SC
Dimension (in)	Ø16" x 3"	Ø22" x 3.5"
Inch	16"	22"
Wattage	26W	31W
Lumens	1950Lm	2480Lm



ORION SERIES

Our new ORION flush mount ceiling light series is a modernized redesign of the classic two-lamp flush mount. A timeless opal diffuser with a polished aluminum trim finish and built-in Tri-Color LED technology.

FEATURES

- Classic design with updated LED technology
- Tri-Color 3000K / 4000K / 5000K presettable by the installer
- Fully dimmable and suitable for both leading edge and trailing edge dimmers
- A low profile contemporary design
- Trim colors are available in satin nickel, matte black, and vintage brass with frosted glass design like shade is suitable for any home, office, hallway, or stairwell
- The integrated LEDs does not require a bulb

AVAILABLE FINISHES



Satin Nickel



Matte Black



Vintage Brass

Product	Orion Modern Slim LED Flush Mount								
Model	17212 SN	17212 VB	17212 BK	17214 SN	17214 VB	17214 BK	17216 SN	17216 VB	17216 BK
Trim Finished	Satin Nickel	Vintage Brass	Matte Black	Satin Nickel	Vintage Brass	Matte Black	Satin Nickel	Vintage Brass	Matte Black
Size	12"			14"			16"		
Wattage	16W			22W			26W		
Lumens	1320Lm			1780Lm			2450Lm		
Dimension (in)	Ø11.3 x 3.2"			Ø13.3 x 3.2"			Ø15.3 x 3.2"		
CCT Selectable	3000K/4000K/5000K								



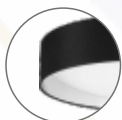
GEMINI SERIES

GEMINI Contemporary LED Flushmount, subtle sophistication meets advance LED technology, integrated LEDs does not require a bulb fully dimmable isolated constant current driver which is compatible with most dimmers. 3000K/4000K/5000K Tri-Color pre-settable by installer.

FEATURES

- Contemporary LED flush mount fixture
- Tri-Color 3000K / 4000K / 5000K pre-settable by installer
- Two size available for 16" and 20"
- Fully dimmable and suitable for both leading edge and trailing edge dimmers
- Isolated integrated for constant current power supply
- Dual color reflector with frosted shade is suitable for any home, living room
- Integrated LEDs does not require a bulb

AVAILABLE FINISHES



Black/White



Black/Gold



White/Black

Product	Contemporary LED Flush Mount					
Model	17316 GB	17316 BW	17316 WB	17320 GB	17320 BW	17320 WB
Reflect (inside)	Gold	Black	White	Gold	Black	White
Reflect (outside)	Black	White	Black	Black	White	Black
Lumens	2100Lm		2000Lm	2400Lm		2250Lm
Wattage	26W			30W		
Size	16"			20"		
Dimension	Ø16" x 3.5" x 13.8"			Ø20" x 3.5" x 17.7"		
CCT Selectable	3000K/4000K/5000K					

ARIES SERIES



Our new ARIES modern LED flush mount ceiling light is the first of its kind. The integrated Tri-Color LED technology allows the flexibility of presetting the color temperature to 3000K, 4000K, or 5000K to best suit your environment.

FEATURES

- Ultra slim 2.15" design
- Tri-Color 3000K / 4000K / 5000K presettable by the installer
- Fully dimmable and suitable for both leading edge and trailing edge dimmers
- Isolated integrated for constant current power supply
- Color finishes are available in satin nickel, matte black, and vintage brass with frosted glass design like shade suitable for any home, office, hallway, or stairwell
- The integrated LEDs does not require a bulb

AVAILABLE FINISHES



Satin Nickel



Matte Black



Vintage Brass



Product	3 Clips Modern Slim LED Flush Mount								
Model	17412 SN	17412 VB	17412 BK	17414 SN	17414 VB	17414 BK	17416 SN	17416 VB	17416 BK
Trim Finished	Satin Nickel	Vintage Brass	Matte Black	Satin Nickel	Vintage Brass	Matte Black	Satin Nickel	Vintage Brass	Matte Black
Size	12"			14"			16"		
Wattage	16W			22W			26W		
Lumens	1320Lm			1780Lm			2450Lm		
Dimension (in)	Ø12" x 2.16"			Ø14" x 2.16"			Ø16" x 2.16"		
CCT Selectable	3000K/4000K/5000K								

STAR DUST SERIES



The integrated Tri-Color STAR DUST LED Technology provides users the flexibility to preset and adjust the color temperature and brightness to best suit their environment.

FEATURES

- ★ Diamond shape diffuser with star effect design
- ★ Tri-color 3000K / 4000K / 5000K Pre-settable by installer
- ★ Energy Saving mode pre-settable by dual wattage setup
- ★ Fully dimmable and suitable for both leading edge and trailing edge dimmers
- ★ Isolated integrated for constant current power supply
- ★ The frosted shade design provides a star effect and is perfect for any living room
- ★ Integrated LEDs does not require a bulb



Product	Star Dust LED Modern Flush Mount		
Model	17512 SD	17514 SD	17516 SD
Dimension (in)	Ø11.2" x 2.3"	Ø13.7" x 2.7"	Ø15.6" x 2.8"
Inch	12"	14"	16"
Wattage	16W/12W	22W/16W	26W/19W
Lumens	1200Lm	1600Lm	1850Lm
CCT Selectable	3000K/4000K/5000K		


LED Surface Mount Ceiling Light

4" Junction Box Light Round Profile



Black Trim



White Trim

DLJB4WH-RD	17604 WH5C	○	11W/760Lmns
DLJB4BK-RD	17604 BK5C	●	11W/760Lmns

4" Junction Box Light Square Profile



Black Trim



White Trim

DLJB4WH-SQ	17604 WH5K	○	10W/600Lmns
DLJB4BK-SQ	17604 BK5K	●	10W/600Lmns

7" Junction Box Light Round Profile



Black Trim



White Trim

DLJB7WH-RD	17607 WH3C	○	12W/840Lmns
DLJB7BK-RD	17607 BK3C	●	12W/840Lmns

9" Junction Box Light Round Profile



Black Trim



White Trim

DLJB9WH-RD	17609 WH5C	○	18W/1440Lmns
DLJB9BK-RD	17609 BK5C	●	18W/1440Lmns

12" Junction Box Light Round Profile



Black Trim



White Trim

DLJB12WH-RD	17612 WH5C	○	24W/1920Lmns
DLJB12BK-RD	17612 BK5C	●	24W/1920Lmns

15" Junction Box Light Round Profile



Black Trim



White Trim

DLJB15WH-RD	17615 WH3C	○	30W/2200Lmns
DLJB15BK-RD	17615 BK3C	●	30W/2200Lmns





ALOHA SERIES

SUPER SLIM PUCK LIGHTS



WH-White Finish



BK-Black Finish



SN-Satin Nickel Finish

2.2 WATT /12V
150Lmns

12030 WH	○	12030 BK	●	12030 SN	●
12050 WH	○	12050 BK	●	12050 SN	●

Available in 3000K / 5000K

Surface/Recessed mounting options available

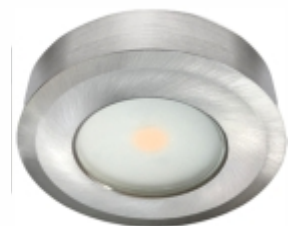
GENESIS SERIES



WH-White Finish



BK-Black Finish



BN-Brush Nickel Finish

4 WATT /12V
320Lmns

12127 WH	○	12127 BK	●	12127 BN	●
12130 WH	○	12130 BK	●	12130 BN	●
12140 WH	○	12140 BK	●	12140 BN	●

Available in 2700K / 3000K / 4000K

Surface/Recessed mounting options available



EMINENT SERIES



WH-White Finish



BK-Black Finish



SN-Satin Nickel Finish

3 WATT /12V
180Lmns

12230 WH	<input type="radio"/>	12230 BK	<input type="radio"/>	12230 SN	<input type="radio"/>
12250 WH	<input type="radio"/>	12250 BK	<input type="radio"/>	12250 SN	<input type="radio"/>

Available in 3000K / 5000K

Surface mount only

ELEGANT SERIES



WH-White Finish



BK-Black Finish



SN-Satin Nickel Finish

3 WATT /12V
180Lmns

12330 WH	<input type="radio"/>	12330 BK	<input type="radio"/>	12330 SN	<input type="radio"/>
12350 WH	<input type="radio"/>	12350 BK	<input type="radio"/>	12350 SN	<input type="radio"/>

Available in 3000K / 5000K

Surface mount only



*Sold Separately



LED Drivers available from
12W to 300W (Dimmable / Non-Dimmable)
100-277V AC input
12/24V DC, Hard wire compatible
Indoor/Outdoor

STEP LIGHT



STAR LED LED Step Light



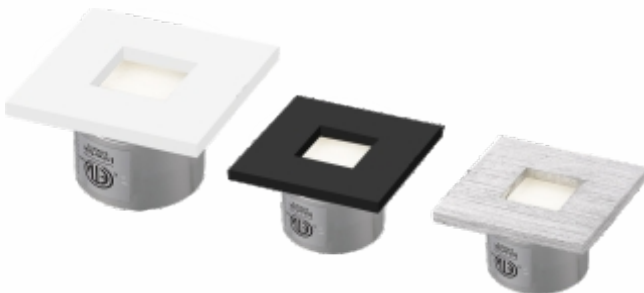
LED Step Light-Round Profile (Diameter 1.65")
0.8W/12V DC (Output Voltage)
80 Lmns / Cut Hole 1"

12330 RWH	<input type="radio"/>	12330 RBK	<input checked="" type="radio"/>	12330 RSN	<input checked="" type="radio"/>
12350 RWH	<input type="radio"/>	12350 RBK	<input checked="" type="radio"/>	12350 RSN	<input checked="" type="radio"/>



LED Step Light-Round Profile with Eye (Diameter 1.65")
0.8W/12V DC (Output Voltage)
80 Lmns / Cut Hole 1"

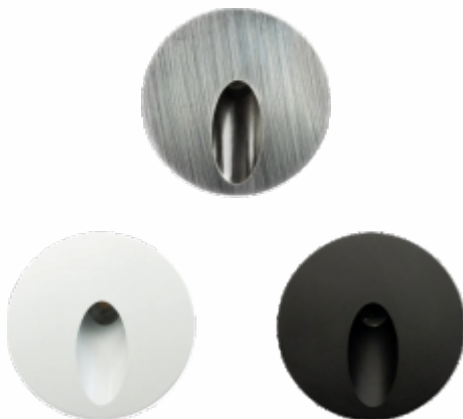
12330 EWH	<input type="radio"/>	12330 EBK	<input checked="" type="radio"/>	12330 ESN	<input checked="" type="radio"/>
12350 EWH	<input type="radio"/>	12350 EBK	<input checked="" type="radio"/>	12350 ESN	<input checked="" type="radio"/>



LED Step Light-Square Profile (Diameter 1.65")
0.8W/12V DC (Output Voltage)
80 Lmns / Cut Hole 1"

12330 SWH	<input type="radio"/>	12330 SBK	<input checked="" type="radio"/>	12330 SSN	<input checked="" type="radio"/>
12350 SWH	<input type="radio"/>	12350 SBK	<input checked="" type="radio"/>	12350 SSN	<input checked="" type="radio"/>

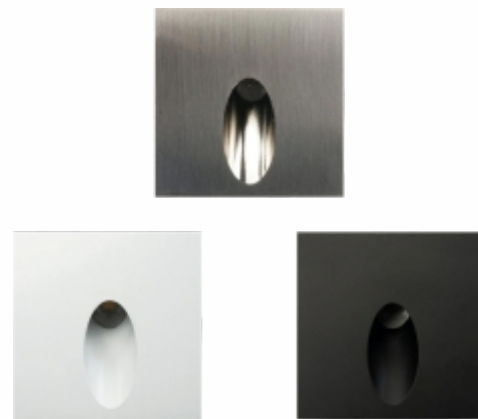
Available in 3000K / 5000K



LED Step Light-Round Profile (Diameter 2")
1W/12V DC (Output Voltage)
80 Lmns / Cut Hole 1.25"

12430 RWH	<input type="radio"/>	12430 RBK	<input checked="" type="radio"/>	12430 RSN	<input checked="" type="radio"/>
12450 RWH	<input type="radio"/>	12450 RBK	<input checked="" type="radio"/>	12450 RSN	<input checked="" type="radio"/>

Available in 3000K / 5000K

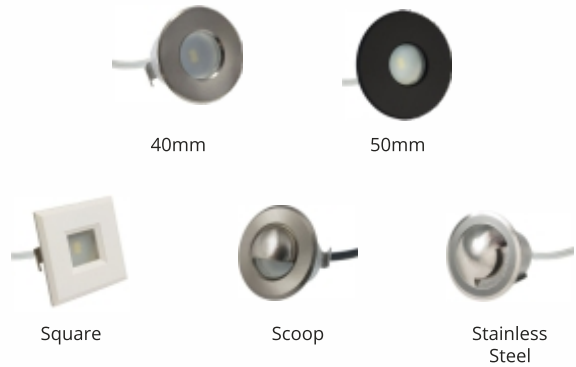


LED Step Light-Round Square (Diameter 2")
1W/12V DC (Output Voltage)
110 Lmns / Cut Hole 1.50"

12430 SWH	<input type="radio"/>	12430 SBK	<input checked="" type="radio"/>	12430 SSN	<input checked="" type="radio"/>
12450 SWH	<input type="radio"/>	12450 SBK	<input checked="" type="radio"/>	12450 SSN	<input checked="" type="radio"/>



STAR LED LED Step Light



Specification		
Voltage	12V DC	12V DC
Wattage	0.5W	1.2W
# of LEDs	2 LEDs	1 LED
Lumens	75Lm	
Dimmable	Yes	
Cutout	35mm	
Dimension	40mm x 25mm x 27mm	
CCT	3000K/5000K	(4 Wire)

PREMIUM QUALITY WEATHER PROOF STEP LIGHTS



*WIN - WINDOW
*VLV - VERTICAL LOUVER

*HLV - HORIZONTAL LOUVER
*VSC - VERTICAL SCOOP

Specification		
Voltage	100~240V AC	12V DC
Wattage	2W	2.2W
Lumens	145Lm	
Dimmable	Yes	
Fits	Standard Single Gang Junction Box	
Dimension	133mm x 84mm x 38mm	
CCT	3000K/5000K	3000K



STEP LIGHT



STAR LED LED Step Light

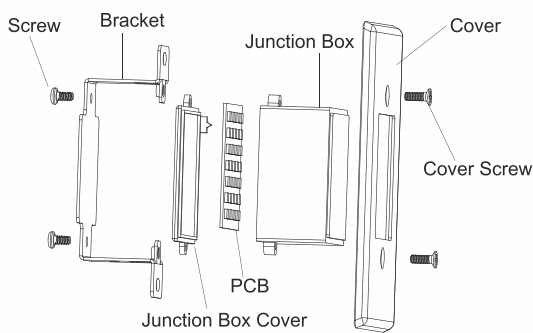
DIE CAST OUTDOOR STEP LIGHTS



12730 WH	12730 BK
12750 WH	12750 BK

HORIZONTAL

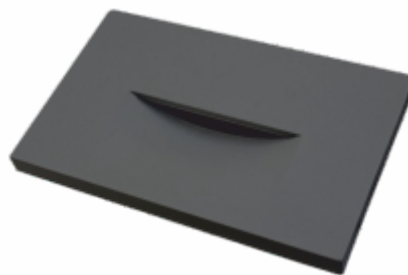
VERTICAL



Specification	
Voltage	100~240V AC
Wattage	2.5W
Lumens	125Lm
Dimmable	Yes
Fits	Standard Single Gang Junction Box
Dimension	115mm x 70mm x 52mm
CCT	3000K/5000K



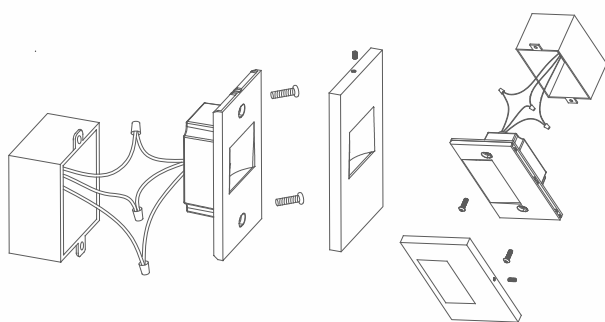
WH-White Finish



BK-Black Finish



12800 WH
12800 BK



Vertical

Horizontal

Specification	
Voltage	100~240V AC
Wattage	3W
Lumens	125Lm
Dimmable	Yes
Fits	Standard Single Gang Junction Box
Dimension	120mm x 76mm x 38mm
CCT	2700K/3000K/3500K/4000K/5000K




LED Motion Sensor Light


Specification	
Voltage	120V
Wattage	20W
Lumens	1400Lm
CCT	3000K/5000K

12930 RWH	<input type="radio"/>	12930 RBK	<input checked="" type="radio"/>
12950 RWH	<input type="radio"/>	12950 RBK	<input checked="" type="radio"/>



Specification	
Voltage	120V
Wattage	24W
Lumens	1700Lm
CCT	3000K/5000K


12930 SWH	<input type="radio"/>	12930 SBK	<input checked="" type="radio"/>
12950 SWH	<input type="radio"/>	12950 SBK	<input checked="" type="radio"/>



Color Temperature Options

- Warm White: 3000K
- Neutral White: 4000K
- Cool White: 5000K

15W | 850Lmns


Closest Sensor Light

12930 CWH	<input type="radio"/>
12940 CWH	<input type="radio"/>
12950 CWH	<input type="radio"/>



Beam Angle



Lifespan



Color Rendering Index

When motion is detected, it automatically turning lights ON and turns the lights off after 30 seconds when the room is vacated


Up & Down Wall Sconce


UP/FULL/DOWN SWITCH ON THE BACK



5 CCT SWITCH ON THE BACK

Specification	
Voltage	120~277V AC
Wattage	15W
Lumens	1000Lm
CCT	2700K/3000K/3500K/4000K/5000K

12900 BK	<input checked="" type="radio"/>
----------	----------------------------------

COMMERCIAL LED LIGHTING

Page # 23 to 37



 LED Flat Panel Light

SPECIFICATIONS	(1' x 4')	(2' x 2')	(2' x 4')	(2' x 4' Premium)
Part No.	14014	14022	14024	14024P
Wattage	30W/35W/40W	30W/35W/40W	30W/40W/50W	60W
Color Selectable	3500K/4000K/5000K	3500K/4000K/5000K	3500K/4000K/5000K	6000K
Dimming	0~10V	0~10V	0~10V	0~10V
Lumens	3750-5000Lm	3750-5000Lm	3750-6250Lm	7000Lm
Input Voltage	120-347V Driver	120-347V Driver	120-347V Driver	120-277V Driver
Life Cycle	50000 Hrs	50000 Hrs	50000 Hrs	50000 Hrs
Height x Length x Width (in)	11.65 x 47.72 x 1.67	23.74 x 23.74 x 1.67	23.74 x 47.72 x 1.67	23.74 x 47.72 x 1.67
Certification	cETL, DLCPremium	cETL, DLCPremium	cETL, DLCPremium	cETL, DLCPremium

Less than 1.8" Deep
 Non-yellowing Prismatic Lens
 Non-yellowing Frosted Lens
 Non-Flickering



Surface Mount Kit
 14014 Kit (1 x 4 Panel)
 14022 Kit (2 x 2 Panel)
 14024 Kit (2 x 4 Panel)

TROFFER PANEL LIGHT



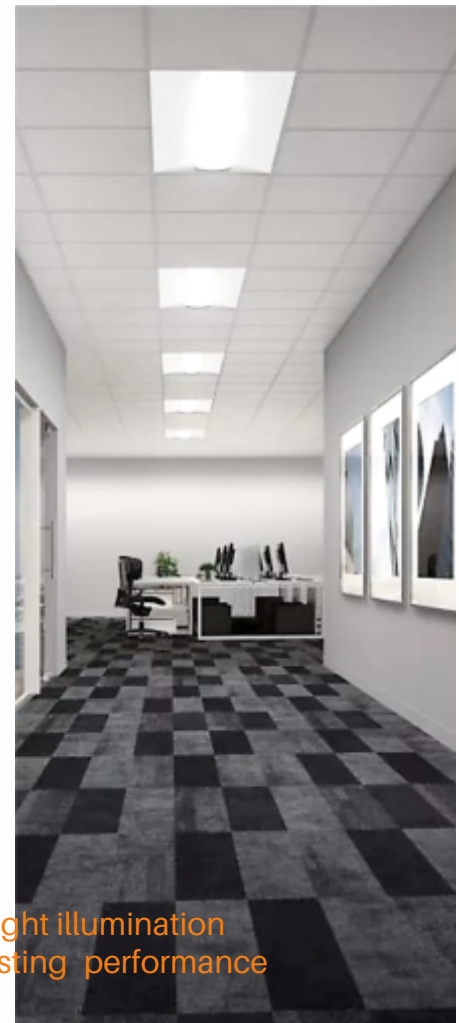
STAR LED LED Troffer Panel Light



The new generation of STAR LED Indirect Basket Troffers sets the standard for performance, flexibility, and glare-free illumination. We have eliminated much of the decision guesswork by providing a fixture that operates from 100-347V, with 3CCT and Multi-Wattage switching. All with high efficacy - 125lm/w. For enhanced energy savings, take advantage of the 0-10V continuous dimming.

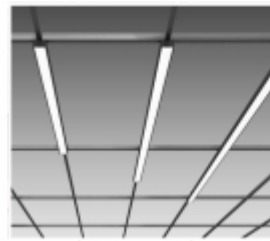
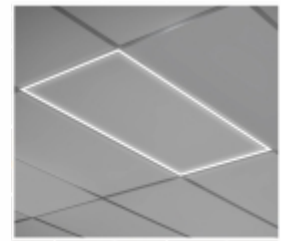
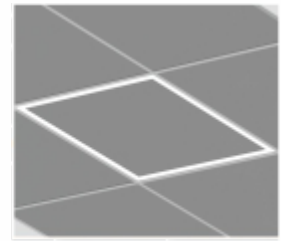
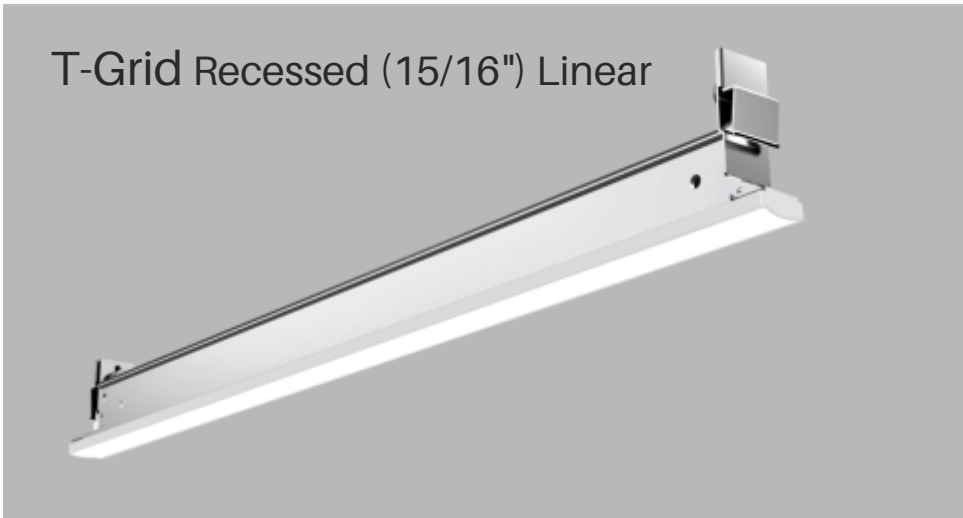
STAR LED Troffer is the perfect solution for large and small public office areas, classrooms and hallways, libraries, cafeterias and dining rooms, hospitals and waiting rooms and long-term care facilities.

SPECIFICATIONS	(2' x 2')	(2' x 4')
Part No.	14122	14124
Wattage	25W/30W/40W	30W/40W/50W
Color Selectable	3500K/4000K/5000K	3500K/4000K/5000K
Dimming	0~10V	0~10V
Lumens	3340-5068 Lm	3935-5822 Lm
Input Voltage	120-347V Driver	120-347V Driver
Life Cycle	50000 Hrs	50000 Hrs
Height x Length x Width (in)	23.74 x 23.74 x 1.96	23.74 x 47.72 x 1.96
Certification	cETL, DLCPremium	cETL, DLCPremium



LED Indoor Light Source

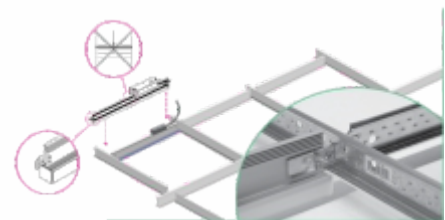
- Light weight, shallow body design
- High efficiency reflective PC cover for soft, glare free and bright illumination
- Integrated heat dissipation technology for safer and long-lasting performance



SPECIFICATIONS	2 ft	4 ft
Wattage	10W	20W
CCT	3500K/4000K/5000K	3500K/4000K/5000K
Dimming	0~10V	0~10V
Lumens	1300 Lm	2600 Lm
Input Voltage	120-277V	120-277V
Life Cycle	50000 Hrs	50000 Hrs
Certification	cETL, DLCPremium	cETL, DLCPremium

	3500K	4000K	5000K
2' T-Grid Luminaire	14235	14240	14250
4' T-Grid Luminaire	14435	14440	14450

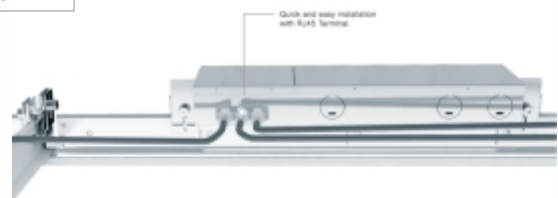
T-Grid allows you
to become your own
Architect and Design
your office!



Power supply [14230] for
14235, 14240, 14250



Power supply [14460] for
14435, 14440, 14450



1 power supply is required for 3 pieces of T-Grid lighting.

FLOOD/AREA LIGHT



Part No.	Wattage	Voltage	CCT	Lumens	Dimmable	Life	Beam Angle /CRI	Operating Temperature	Warranty
15500	500W	120~277V	5000K	69937Lm	0-10V	50000Hrs.	30°/73	-40° to 45°C	5 Yrs

STAR LED high efficiency lights are manufactured with Die cast aluminum material to last long an era with polycarbonate optic lens and 27" cord makes it more desirable product. Star LED has got 10KV surge protection and instant start as an inbuilt option.

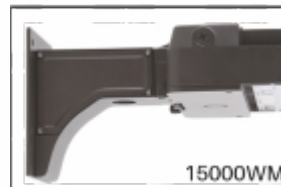
AREA LIGHT



Splitter Mount
An optional cast aluminum mass and adapter secures fixture heads to nominal 2-3/8" O.D. horizontal steel union arm.



Tension Mount
Die-cast aluminum tension mount is easily adapted to many surfaces and allows easy fixture aiming angles.



Wall Mount
Wall Mount is easy to install for direct wall mounting with 1/2" conduit wiring or standard J-box mounting



Photocell Sensor
Photocell sensor is easy to install as plug n play accessory on any area light.

Optional Accessories (Sold Separately):

Part No.	Selectable Wattage	Voltage	Selectable CCT	Lumens /Watt	Warranty
15150	100/120/150W	120~347V	3000K/4000K/5000K	140Lm/W	5 Yrs
15200	200W	120~277V	5000K	130Lm/W	5 Yrs
15300	200/240/300W	120~347V	3000K/4000K/5000K	130Lm/W	5 Yrs





Round & Square Pole Available in 8', 10', 12', 15', 20' & 25' Height

ROUND



3" Round Tenon Vertical to 2-3/8" Single Head



4" Round Tenon Vertical to 2-3/8" Single Head



5" Round Tenon Vertical to 2-3/8" Single Head



3" Round Tenon Vertical to 2-3/8" Single Head (290°)

SQUARE



3" Square Tenon Vertical to 2-3/8" Single Head



4" Square Tenon Vertical to 2-3/8" Single Head

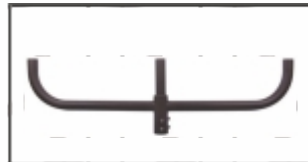


5" Square Tenon Vertical to 2-3/8" Single Head

ROUND BULLHORN



2.5" Round Tenon Bullhorn Vertical to 2-3/8" Double Heads (180°)



2.5" Round Tenon Bullhorn Vertical to 2-3/8" Triple Heads (180°)



2.5" Round Tenon Bullhorn Vertical to 2-3/8" Double Heads (120°)

SQUARE TENON



4" Square Tenon Vertical to 2-3/8" Double Heads (180°)



4" Square Tenon Vertical to 2-3/8" Triplet Heads (180°)

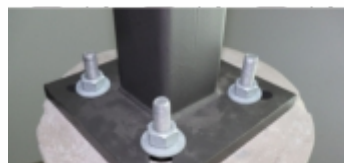


4" Square Tenon Vertical to 2-3/8" Quad Heads (90°)



4" Square Tenon Cap (Black)

WALL MOUNT



Wedge anchors for concrete



4" Wallmount to 2-3/8" Single Head



4" Wallmount to 2-3/8" Single Head (90°)

FLOOD/AREA LIGHT

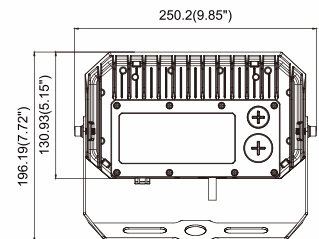
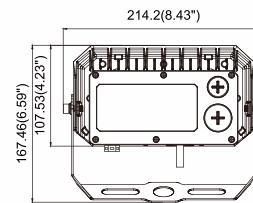
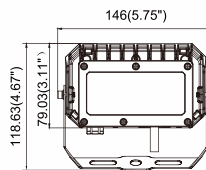


Mini Flood Light



Power Tunable and CCT Switchable

Part No.	Selectable Wattage	Voltage	Selectable CCT	Lumens /Watt	Warranty
15030	30/20/15W	120~347V	3000K/4000K/5000K	130Lm/W	5 Yrs
15130	30W	120~347V	5000K	130Lm/W	5 Yrs
15050	50W-5K	120~347V	5000K	130Lm/W	5 Yrs



- Delicate appearance design
- Good heating dissipation
- Low light attenuation
- High waterproof rate
- High consistency on lamp direction
- User-friendly design, high installation efficiency, a variety of brackets for choice



Trunion Mount
15100TM
*Sold Separately

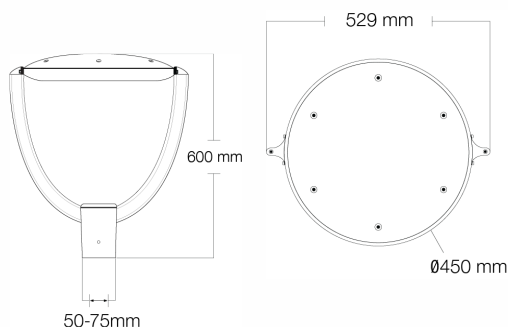


Pole Top Area Light

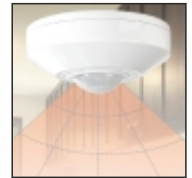
Complete with Photocell Receptacle & CCT Switchable

Part No.	Wattage	Voltage	Selectable CCT	Lumens /Watt	Warranty
16075	75W	120~347V	3000K/4000K/5000K	120Lm/W	5 Yrs
16100	100W	120~347V	3000K/4000K/5000K	120Lm/W	5 Yrs
16150	150W	120~347V	3000K/4000K/5000K	120Lm/W	5 Yrs

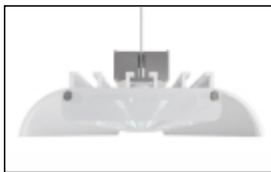
- 0~10V dimmable
- High efficiency optics
- Polyester powder coat finish
- Approved by international dark sky association
- Fits Up To 2.75" OD pole
- Power cord 23", 74"
- Aluminum housing, bronze finish
- 50,000 Hrs life



LED Slim Line Hi-Bay Light


Slim Line Hi-Bay


Motion Sensor Optional

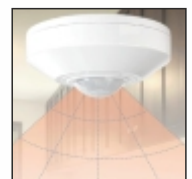


- Sandblasting oxidation treatment on heat sink makes fixture body with better abrasion performance and corrosion resistance
- Acrylic housing to avoid eye glare, both side covers prevent leaking
- Various beam angle options available 30°/60°/90°
- Fixture powered by mean-well driver



Part No.	Size	Wattage	Voltage	CCT	Lumens	Warranty
17250 (2')	26.5 x 590 x 100	100W	120~277V	5000K	15200Lm	5 Yrs
17550 (5')	26.5 x 1495 x 100	200W	120~347V	5000K	30400Lm	5 Yrs

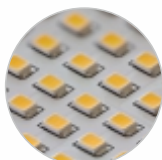
LED Linear Hi-Bay Light


Linear Hi-Bay


Motion Sensor Optional



Chain & V-hooks



Extremely Efficient LED Chips

STAR LED Linear high bay lighting is a popular choice in warehouse lighting. They are easy to hang with two gibber cables and easy to connect with the junction box right on back. Popular for their wide light distribution, they are a great choice for saving energy.



Anti-glare PC Lens



Air vent & Gap Designed

Part No.	Selectable Wattage	Voltage	Selectable CCT	Lumens/W	Warranty
17350 (3')	110W/165W/220W	120~347V	3500K/4000K/5000K	140Lm/W	5 Yrs



Part No.	Size (in)	Selectable Wattage	Voltage	Selectable CCT	Lumens/W	Warranty
17110 (1')	14.2 x 11 x 1.9	70W/90W/110W	120~347V	3500K/4000K/5000K	140Lm/W	5 Yrs
17150 (1')	14.2 x 11 x 1.9	110W/130W/150W	120~347V	3500K/4000K/5000K	140Lm/W	5 Yrs
17220 (1.5')	18.1 x 11.8 x 1.9	180W/200W/220W	120~347V	3500K/4000K/5000K	140Lm/W	5 Yrs
17295 (2')	23 x 12.6 x 1.9	255W/275W/295W	120~347V	3500K/4000K/5000K	140Lm/W	5 Yrs



STAR LED new robust and compact linear high bay has die-cast aluminum housing and a polycarbonate lens that provides better protection than sheet metal frames used in traditional high bays. This series has a standard 10ft cord whip, light weight body, smaller footprint than traditional high bays, and several mounting options; all of which make installation a breeze! You can now connect the fixture to the correct voltage and adjust the wattage and colour temperature with ease. Take advantage of the 0-10V dimming to configure the luminaire to meet the needs of your project without needing to order specific options.




Round Hi-Bay


Instant start
0~10V dimmable
Shatter proof optic lens

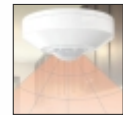


Motion Sensor Optional

Part No.	Selectable Wattage	Voltage	Selectable CCT	Lumens/W	Warranty
17681WH/BK	60W/80W/100W	120~347V	3000K/4000K/5000K	150Lm/W	5 Yrs



Instant start
0~10V dimmable
Shatter proof optic lens



Motion Sensor Optional

Part No.	Selectable Wattage	Voltage	Selectable CCT	Lumens/W	Warranty
17125WH/BK	100W/120W/150W	120~347V	3000K/4000K/5000K	150Lm/W	5 Yrs



Instant start
0~10V dimmable
Shatter proof optic lens



Motion Sensor Optional

Part No.	Selectable Wattage	Voltage	Selectable CCT	Lumens/W	Warranty
17224WH/BK	200W/220W/240W	120~347V	3000K/4000K/5000K	150Lm/W	5 Yrs



Instant start
0~10V dimmable
Shatter proof optic lens



Motion Sensor Optional

Part No.	Selectable Wattage	Voltage	Selectable CCT	Lumens/W	Warranty
17473	240W/270W/300W	120~277V	3000K/4000K/5000K	150Lm/W	5 Yrs
17474	240W/270W/300W	277~480V	3000K/4000K/5000K	160Lm/W	5 Yrs



Instant start
0~10V dimmable
Shatter proof optic lens



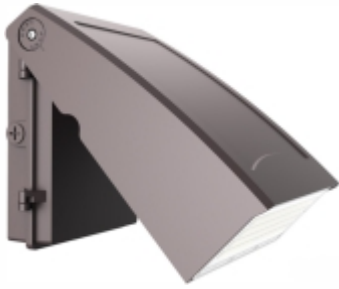
Motion Sensor Optional

Part No.	Wattage	Voltage	CCT	Lumens/W	Warranty
17100	100W	120~277V	5000K	140Lm/W	5 Yrs
17200	200W	120~277V	5000K	140Lm/W	5 Yrs

Lumen package may change - depends on wattage and CCT



WALL PACKS



Architectural Wall Pack

Part No.	Selectable Wattage	Voltage	Selectable CCT	Lumens/W	Warranty
18040	10W/20W/30W/40W	120~347V	3000K/4000K/5000K	126Lm/W	5 Yrs
18080	50W/60W/70W/80W	120~347V	3000K/4000K/5000K	125Lm/W	5 Yrs
18120	60W/80W/100W/120W	120~347V	4000K	133Lm/W	5 Yrs



Traditional Wall Pack

Part No.	Selectable Wattage	Voltage	Selectable CCT	Lumens/W	Warranty
18060	30W/40W/60W	120~347V	3000K/4000K/5000K	140Lm/W	5 Yrs
18468	45W/60W/80W	120~347V	3000K/4000K/5000K	135Lm/W	5 Yrs
18812	80W/100W/120W	120~347V	3000K/4000K/5000K	140Lm/W	5 Yrs



Classic Slim Wall Pack

Part No.	Selectable Wattage	Voltage	Selectable CCT	Lumens/W	Warranty
18234	20W/30W/40W	120~347V	3000K/4000K/5000K	128Lm/W	5 Yrs
18568	40W/60W/80W	120~347V	3000K/4000K/5000K	130Lm/W	5 Yrs
18912	80W/100W/120W	120~347V	3000K/4000K/5000K	130Lm/W	5 Yrs



Mini Wall Pack

Part No.	Selectable Wattage	Voltage	Selectable CCT	Lumens/W	Warranty
18152BK	10W/15W/20W	120~347V	3000K/4000K/5000K	125Lm/W	5 Yrs
18152BZ	10W/15W/20W	120~347V	3000K/4000K/5000K	125Lm/W	5 Yrs

Black

Bronze



Motion Sensor



Motion Sensor Knuckle Mount



Photoelectric Switch



Photocell



Photocell Extension



Remote

Accessories sold separately





Part No.	Selectable Wattage	Voltage	Selectable CCT	Lumens/W	Warranty
19234	20W/30W/40W	120~347V	3000K/4000K/5000K	125Lm/W	5 Yrs
19467	40W/60W/75W	120~347V	3000K/4000K/5000K	125Lm/W	5 Yrs



Part No.	Wattage	Voltage	CCT	Lumens	Warranty
19045	45W	120~347V	4000K	5958Lm	5 Yrs
19075	75W	120~347V	4000K	9558Lm	5 Yrs



Part No.	Selectable Wattage	Voltage	Selectable CCT	Lumens/W	Warranty
19468	40W/60W/80W	120~277V	3500K/4000K/5000K	135Lm/W	5 Yrs



Infrared Motion Sensor



Motion Sensor



Motion Sensor Knuckle Mount



Remote

Accessories sold separately

EXPLOSION PROOF FIXTURE



Wire Guard sold separately



- Suitable for hazardous environment
- Chemical Processing
- Chemical Storage
- Distilleries/Alcohol Production
- Marine Engine Rooms
- Grain Processing / Storage
- Marine Environment
- Mine Lighting
- Oil & Gas Lighting

Die-cast aluminum - Orange finish
IP66 driver with 10kV surge protection

Part No.	Wattage	Voltage	CCT	Lumens	Warranty
19060	60W	120~277V	5000K	8870Lm	5 Yrs
19100	100W	120~277V	5000K	15967Lm	5 Yrs
19150	150W	120~277V	5000K	23834Lm	5 Yrs



VAPOUR TIGHT FIXTURES



Vapour Tight Light



Part No.	Selectable Wattage	Voltage	Selectable CCT	Lumens/W	Warranty
19125 (2')	15W/20W/25W	120~347V	3000K/4000K/5000K	130Lm/W	5 Yrs



Part No.	Selectable Wattage	Voltage	Selectable CCT	Lumens/W	Warranty
19235 (4')	20W/28W/35W	120~347V	3000K/4000K/5000K	130Lm/W	5 Yrs
19346 (4')	30W/45W/60W	120~347V	3000K/4000K/5000K	130Lm/W	5 Yrs



Part No.	Selectable Wattage	Voltage	Selectable CCT	Lumens/W	Warranty
19105 (4')	70W/80W/90W/105W	120~347V	3000K/4000K/5000K	135Lm/W	5 Yrs
19200 (4')	150W/175W/200W	120~347V	3000K/4000K/5000K	135Lm/W	5 Yrs



Part No.	Selectable Wattage	Voltage	Selectable CCT	Lumens/W	Warranty
19110 (8')	65W/75W/90W/110W	120~347V	3000K/4000K/5000K	140Lm/W	5 Yrs



Emergency LED Driver



Microwave Motion Sensor



Motion Sensor Knuckle Mount



Remote

Accessories sold separately



Vapour Tight Wall Pack

Part No.	Wattage	Voltage	CCT	Lumens	Warranty
19020	20W	120~277V	4000K	1800Lm	5 Yrs

- Die Cast Solid Housing
- Ceiling mount/Wall mount
- Light box sold separately





Connector kit



120° Connector



90° Connector



Louver kit



Inch-in Recessed kit



Recessed kit



X Connector



T Connector



Suspension kit



Wall Mount kit

Accessories sold separately

Part No.	Wattage	Voltage	Selectable CCT	Lumens	Warranty
19440WH (4')	40W	120~347V	3000K/3500K/4000K	4608Lm	5 Yrs
19440BK (4')	40W	120~347V	3500K/4000K/5000K	4608Lm	5 Yrs
19880WH (8')	80W	120~347V	3000K/3500K/4000K	9263Lm	5 Yrs
19880BK (8')	80W	120~347V	3000K/3500K/4000K	9263Lm	5 Yrs

Available finishes

- Black
- White

Flexible Mounting Options
(T Bar, Recessed, Suspension, and Wall Mount kits sold separately)

CCT Selectable
(3000K/3500K/4000K)

Damp Location Rated
0-10V Dimmable

Polycarbonate Frosted Lens
optional deep cell Louver available

Backlit Connector Options Available to help you create your own seamless and unique design

46" Power Cord With Dimming Cables connects to input power or other luminaires in row mounting applications



PARKADE FIXTURES



STAR LED **Parkade Light**



Emergency LED Driver



12V Motion Sensor



Remote



Connection Bracket

Accessories sold separately

Part No.	Selectable Wattage	Voltage	Selectable CCT	Lumens	Warranty
20345 (4')	30W/40W/50W	120~347V	3000K/4000K/5000K	7500Lm	5 Yrs
20681 (8')	60W/80W/100W	120~347V	3000K/4000K/5000K	15700Lm	5 Yrs

Internal 0-10V Dimming
12V auxiliary control

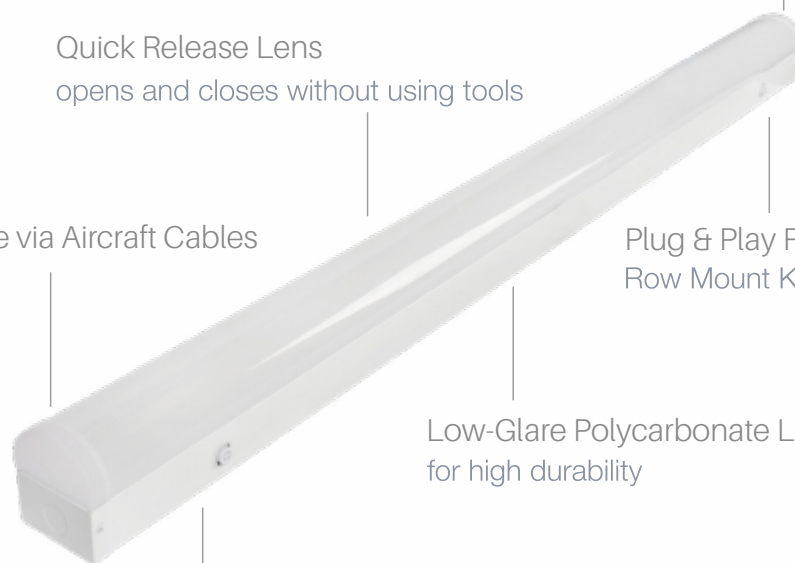
Quick Release Lens
opens and closes without using tools

Cover Secured to Base via Aircraft Cables
for ease of installation

Plug & Play Row Mount Kit
Row Mount Kit sold separately

Low-Glare Polycarbonate Lens
for high durability

Built-in Microwave Motion Sensor**
behind the lens





STAR LED Wrap Fixture Linkable

Ideal for commercial and industrial applications
Can be surface or pendant mounted

Part No.	Wattage	Voltage	Selectable CCT	Lumens	Warranty
20448 (4')	48W	120~277V	3000K/4000K/5000K	5280Lm	5 Yrs



STAR LED Work Light

Ideal for all new construction and temporary lighting applications
Waterproof isolated driver
Stainless steel protective enclosure
Separated driver and lamp body
Hook mount included
Complete with 5m cord and 120V male plug

Part No.	Wattage	Voltage	CCT	Lumens	Warranty
20100	100W	120V	5000K	12500Lm	5 Yrs

* Tripod sold separately



STAR LED RGB Wall Cylinder

120~277V
16 colors
50% uplight, 50% downlight
Cylinder Rings illuminate
Remote control included



Part No.	Wattage	Voltage	CCT	Lumens	Warranty
20030	30W	120V	RGBW	1800Lm	5 Yrs



Motion Sensor Outdoor
20001BK



Motion Sensor Outdoor
20001WH



Ceiling Mount Occupancy Sensor
20002

STAR LED Sensors



Dusk till Dawn Photoelectric Sensor
20003

STRIP/ROPE LED LIGHTING

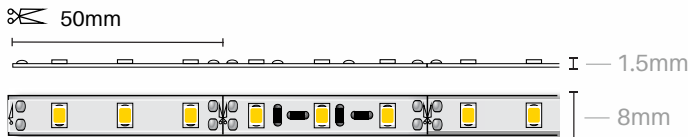
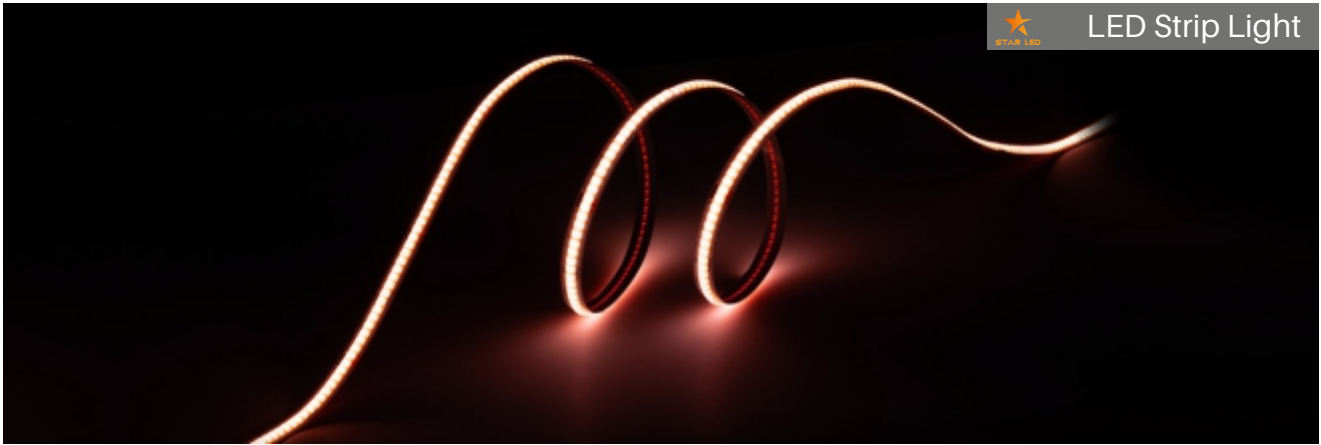
Channels & Drivers

Page # 39 to 49



STAR LED

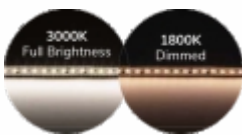
LED STRIP LIGHTS



CCT	Part No.		
	5Mtr	10Mtr	25Mtr
3000K	21530	21630	21730
4000K	21540	21640	21740
5000K	21550	21650	21750

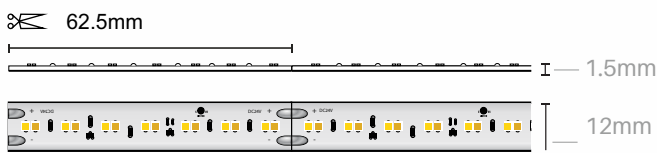
Specifications	
Wattage	5W/Mtr
Lumens	470Lm/mtr
Voltage	12/24V DC
Color Temp*	3000K / 4000K / 5000K
# of LEDs	60 LEDs/mtr
Roll Length	5mtr/10mtr/25mtr
IP Rating	20

*Available in both (12V and 24V)



DIM TO WARM LED STRIP

Dimming from 3000K to 1800K



Length	9W/Mtr	18W/Mtr
5Mtr	22509	22518

Specifications	
Wattage	9W/mtr 18W/mtr
Lumens	950Lm/mtr 1800Lm/mtr
Voltage	24V DC
Color Temp*	Dim to Warm (3000K / 1800K)
# of LEDs	224 LEDs/mtr
Roll Length	5mtr
IP Rating	20

Seamless Connector
Adds length

Connector on One End
Cut strip to power, 9" (23cm)

Connector on Both Ends
For corners

Waterproof Connector
For corners or to make new lengths (solder on)

*Accessories sold separately

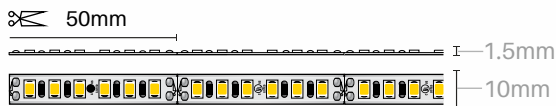
LED STRIP LIGHTS



STAR LED LED Strip Light



Indoor Version

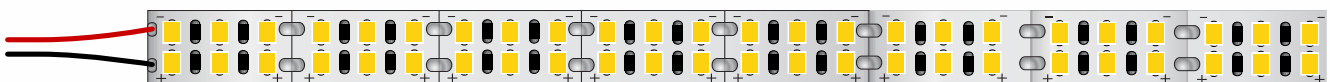


Moisture Proof Version

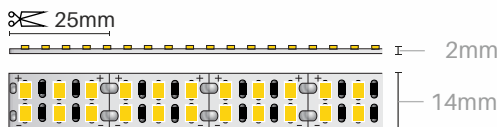


CCT	Indoor Version		Moisture Proof Version	
	5Mtr	30Mtr	5Mtr	30Mtr
2700K	23527	-	24527	-
3000K	23530	23330	24530	24330
3500K	23535	23335	24535	24335
4000K	23540	-	24540	-
5000K	23550	-	24550	-

Specifications	
Wattage	14.4W/Mtr
Lumens	1575Lm/mtr
Voltage	24V DC
Color Temp*	2700K / 3000K / 3500K / 4000K / 5000K
# of LEDs	120 LEDs/mtr
Roll Length	5mtr 30mtr
IP Rating	20 65



Must be used in channels
See page #47 for options



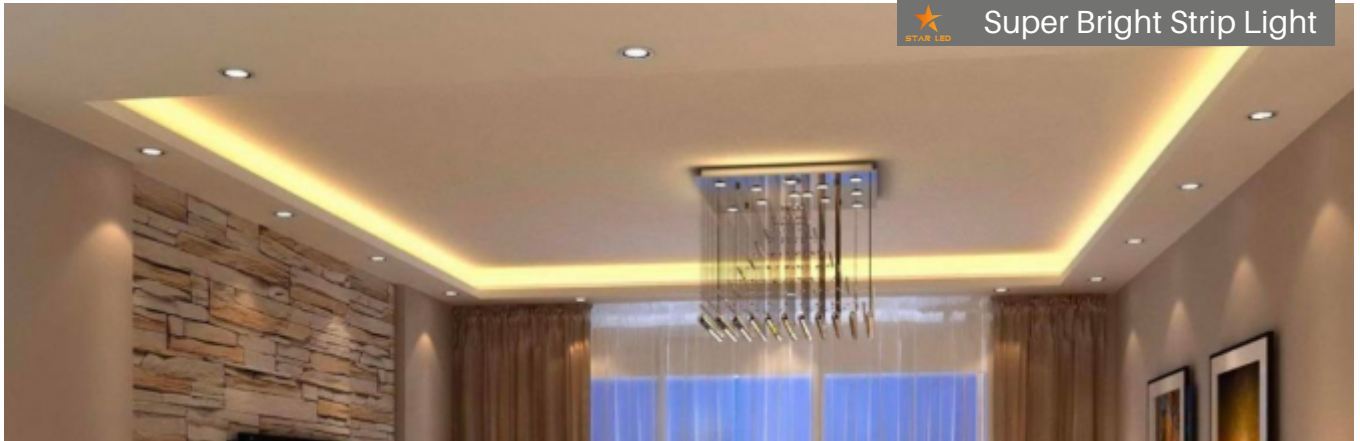
Length	3000K	4000K
5Mtr	25530	25540

Specifications	
Wattage	28.8W/mtr
Lumens	2640Lm/mtr
Voltage	24V DC
Color Temp*	3000K / 4000K
# of LEDs	240 LEDs/mtr
Roll Length	5mtr
IP Rating	20



*Accessories sold separately





STAR LED Super Bright Strip Light



20mm

1.5mm

10mm

CCT	Part No.	
	4Mtr	
2700K	25427	
3000K	25430	
4000K	25440	

Must be used in channels
See page #47 for options



Specifications	
Wattage	14.4W/Mtr
Lumens	470Lm/mtr
Voltage	24V DC
Color Temp*	2700K / 3000K / 4000K
# of LEDs	350 LEDs/mtr
Roll Length	4mtr
IP Rating	20



12V : 50mm | 24V : 100mm

4mm

10mm

CCT	Part No.	
	5Mtr (12V)	10Mtr (24V)
2700K	-	26027
3000K	26530	26030
5000K	26550	-



Specifications	
Wattage	4.8W/Mtr
Lumens	492Lm/mtr
Voltage	12V DC 24V DC
Color Temp*	3000K / 5000K 2700K / 3000K
# of LEDs	60 LEDs/mtr
Roll Length	5mtr 10mtr
IP Rating	65

Connector on One End
Cut strip to power, 9" (23cm)

Seamless Connector
Adds length

L Connector
For corners

Waterproof Connector
For corners to make new lengths (solder on)

Waterproof Connector

*Accessories sold separately

LED STRIP LIGHTS

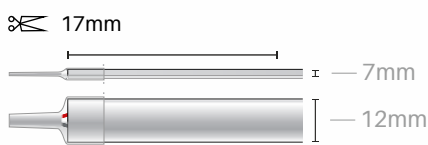


INDOOR

CCT	Part No.	
	25Mtr (12V)	25Mtr (24V)
3000K	26730	26830
4000K	26740	26840
5000K	26750	26850



Specifications	
Wattage	8W/mtr
Lumens	850Lm/mtr
Voltage	12V DC 24V DC
Color Temp*	3000K / 4000K / 5000K
# of LEDs	480 LEDs/mtr
Roll Length	25mtr
IP Rating	20



OUTDOOR

CCT	Part No.
	5Mtr
3000K	26930
4000K	26940



Specifications	
Wattage	18W/mtr
Lumens	990Lm/mtr
Voltage	24V DC
Color Temp*	3000K / 4000K
# of LEDs	420 LEDs/mtr
Roll Length	5mtr
IP Rating	65

Seamless Connector
Adds length

Connector on One End
Cut strip to power

Connector on Both Ends
For corners

L-Connector
For corners

Waterproof Connector
For corners to make new lengths (solder on)

*Accessories sold separately



STAR LED

LED STRIP LIGHTS



STAR LED **RGB** Strip Light



100mm



INDOOR

Part No.		
5Mtr	10Mtr	25Mtr
27005	27010	27025

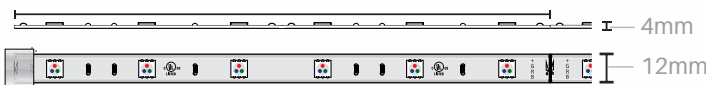


Available in both 12V & 24V

Specifications	
Wattage	7.2W/Mtr
Lumens	410Lm/mtr
Voltage	12V DC 24V DC
Color Temp*	RGB Color Changing
# of LEDs	30 LEDs/mtr
Roll Length	5mtr / 10mtr / 25mtr
IP Rating	20



200mm



OUTDOOR

Part No.
10Mtr
27110



RGB Controller with Remote
Sold separately

Specifications	
Wattage	7.2W/Mtr
Lumens	410Lm/mtr
Voltage	24V DC
Color Temp*	RGB Color Changing
# of LEDs	30 LEDs/mtr
Roll Length	10mtr
IP Rating	67



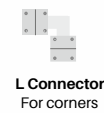
Connector on One End
Cut strip to power, 9" (23cm)



Connector on Both Ends
For Corners



Seamless Connector
Adds length

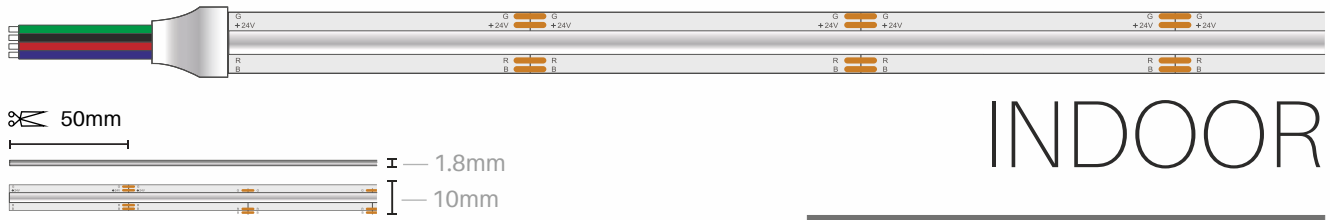
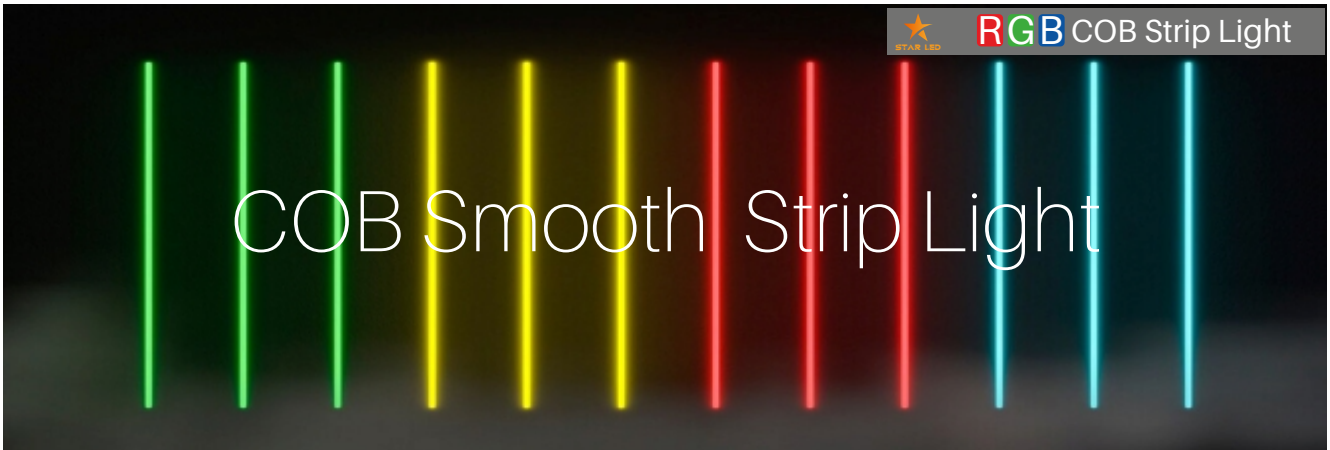


L Connector
For corners



Waterproof Connector
For Corners or to add length

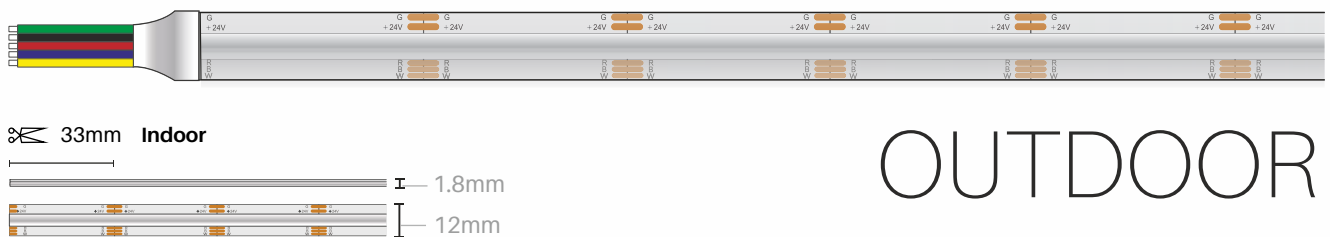
*Accessories sold separately



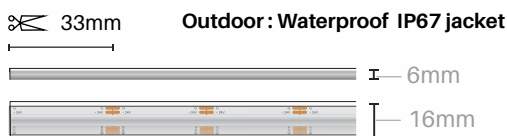
INDOOR

Part No.
4Mtr
27120

Specifications	
Wattage	14.4W/Mtr
Lumens	800Lm/mtr
Voltage	24V DC
Color Temp*	RGB Color Changing
# of LEDs	900 LEDs/mtr
Roll Length	4mtr
IP Rating	20



OUTDOOR

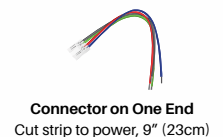


Specifications	
Wattage	20W/Mtr
Lumens	1100Lm/mtr
Voltage	24V DC
Color Temp*	RGB Color Changing
# of LEDs	900 LEDs/mtr
Roll Length	4mtr
IP Rating	20 / 67

Part No.	4Mtr	25Mtr
Indoor	27130	27140
Outdoor	27150	-



*Accessories sold separately

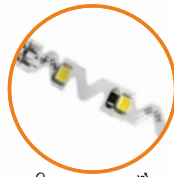
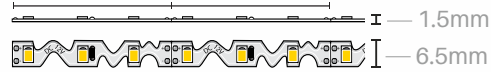




STAR LED

LED STRIP LIGHTS

41.5mm (12V) | 83mm (24V)



Curve LED Strip Light

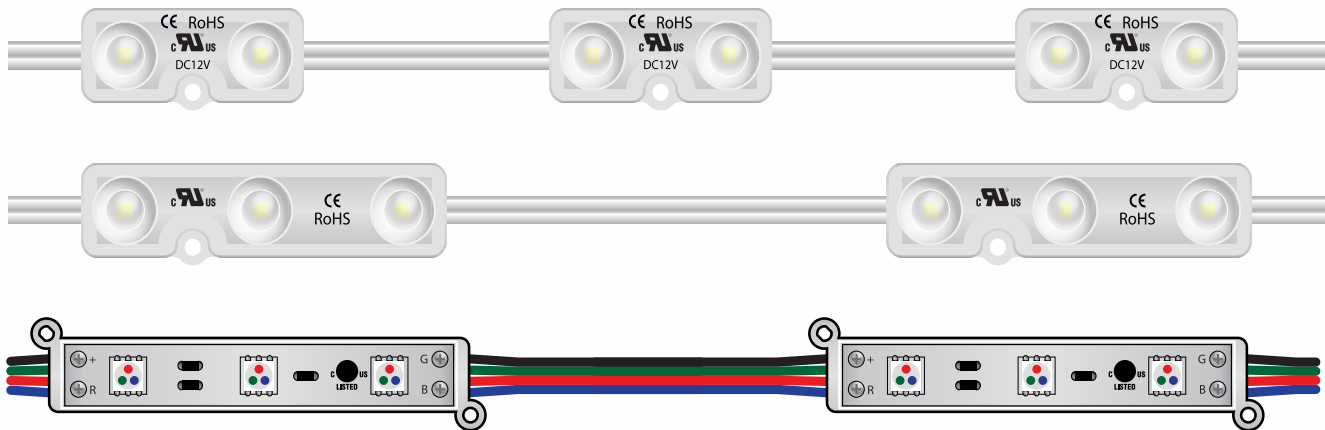
Curved Strip Light



Part No.	12V	24V
3000K	27230	27330
3500K	27235	27335
5000K	27250	27350
Red	27260	-
Green	27270	-
Blue	27280	-

Specifications	
Wattage	7.2W/Mtr
Lumens	852Lm/mtr
Voltage	12V DC 24V DC
Color Temp*	3000K / 3500K / 5000K 3000K / 3500K Red/Green/Blue CCT (2700-5000K)
# of LEDs	72 LEDs/mtr
Roll Length	5mtr
IP Rating	64

LED Sign Module



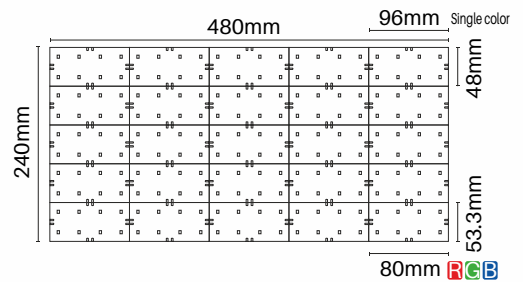
Part No.	2Mod	3Mod
3000K	27430	-
6000K	27460	27560
RGB	-	27570

Specifications			
Module	2MOD	3MOD	RGB Color Changing
Wattage	0.66W/Mod	1.02W/Mod	0.75W/Mod
Lumens	55Lm/Mod	75Lm/Mod	75Lm/Mod
Voltage	12V	12V	12V
Color Temp*	3000K / 6000K	6000K	RGB
# of LEDs	2 LEDs/Mod	3 LEDs/Mod	3 LEDs/Mod
Roll Length	12.5'	12.5'	12.5'
IP Rating	65	65	65

12.5' length includes 25 modules



FLEXIBLE LED PANEL/NEON LED



CCT	Part No.
3000K	27630
4000K	27640
5000K	27650
6000K	27660
RGB	27670

Specifications		
Wattage	18W/Sheet	25.92W/Sheet
Lumens	2850Lm/Sheet	1410Lm/Sheet
Voltage	24V	24V
Color Temp*	3000K / 4000K 5000K / 6000K	RGB Color Changing
# of LEDs	2 LEDs/Sheet	162 LEDs/Sheet
IP Rating	20	20

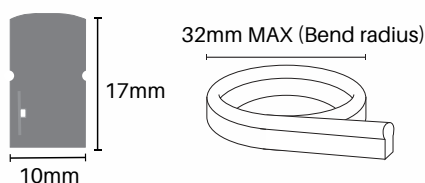


STAR LED RGB Neon Light



CCT	Part No.
RGB Color changing	27580

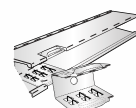
Specifications	
Wattage	12.8W/Mtr
Lumens	485Lm/mtr
Voltage	24V DC
Color Temp*	RGB Color Changing
Roll Length	6mtr
IP Rating	66



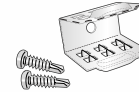
End Cap



Plastic Mounting Clips



Mounting Track



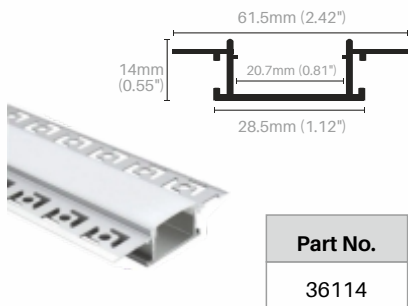
Slim Mounting Clips



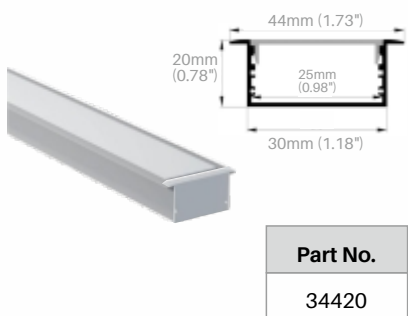
Mounting Clips

All available in 8' length

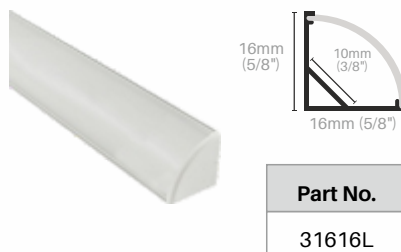
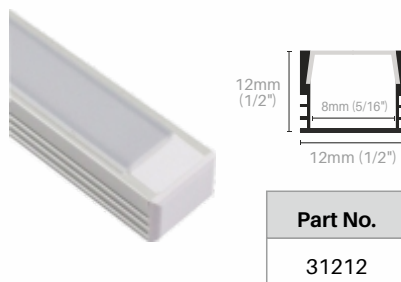
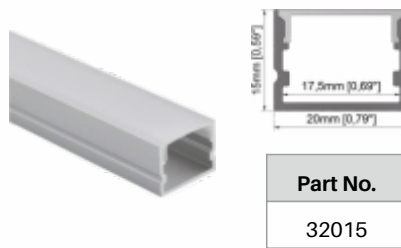
RECESSED



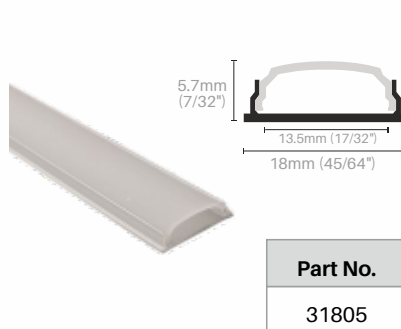
Drywall Mud In Channel



SURFACE MOUNT

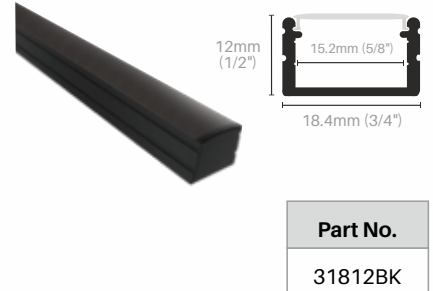


Corner Channel



Curve Flexible Channel

BLACK FINISH



Corner Channel





STAR LED LED Drivers

“ We provide consultancy for your next upcoming project ”

Constant Voltage Driver Class 2



12V Non Dimmable		12V Dimmable		24V Dimmable	
12W	Part No. 41212	60W	Part No. 41260	60W	Part No. 42460
24W	Part No. 41224	80W	Part No. 41280	80W	Part No. 42480
48W	Part No. 41248	96W	Part No. 41296	96W	Part No. 42496
		150W	Part No. 41215	150W	Part No. 42415
		200W	Part No. 41220	200W	Part No. 42420
		300W	Part No. 41230	300W	Part No. 42430





STAR LED

ROPE LIGHT FLAT/ROUND

STAR LED Rope Light Flat



Part No. 43001



Part No. 43002



Part No. 43003



Part No. 43004

* Accessories sold separately
Roll length: 50Mtrs

Voltage : 110V



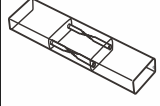
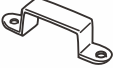
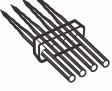
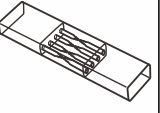


RGB

Part No. 43005



RGB Power Adapter
with RF Wireless RGB controller
(Included in Box)
Input: 120VAC
Controller: RGB RF Wireless

 End Cap	 2 Pin-Header	 2 Pin Inter-Connector
 Rope Holder	 4 Pin Header	 4 Pin Inter-Connector

STAR LED Rope Light Round



Part No. 43006



Part No. 43007



Part No. 43008



Part No. 43009





* Accessories sold separately
Roll length: 50Mtrs

Voltage : 110V



Part No. 43010



 End Cap	 Extension Cord	 PVC Splice Connector Kit
 Mounting clips	 L Connector	 Splice Connector
 T Connector	 X Connector	 Power Cord

LANDSCAPE LED LIGHTING

Page # 51 to 55

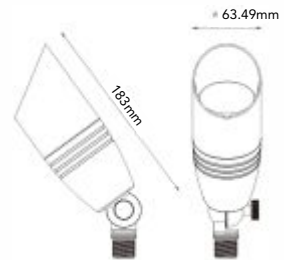


STAR LED Landscape Light



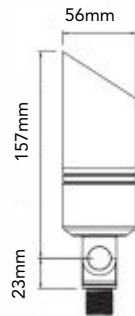
Product	Uplight
Part No.	44001
Voltage	12V
Wattage	7W (MR16 Lamp)

*Lamp Sold separately



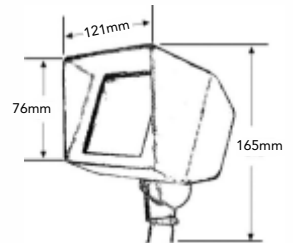
Product	Uplight
Part No.	44002
Voltage	12V
Wattage	7W (MR16 Lamp)

*Lamp Sold separately



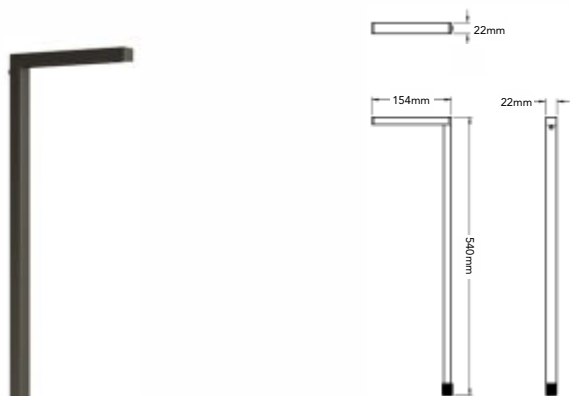
Product	Uplight
Part No.	44003
Voltage	12V
Wattage	7W (MR16 Lamp)

*Lamp Sold separately



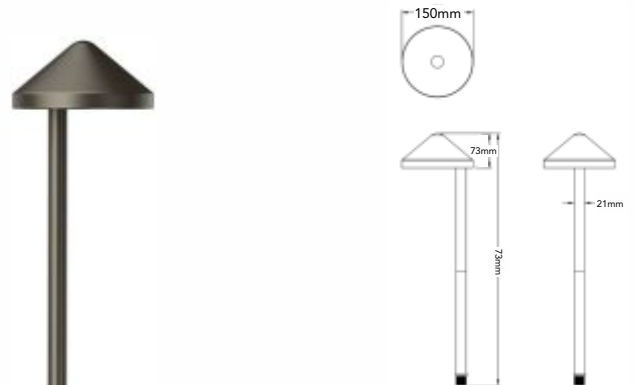
Product	Flood Light
Part No.	44004
Voltage	12V
Wattage	3W (G4 Lamp)

*Lamp Sold separately



Product	L Path Light
Part No.	44005
Voltage	12V
Wattage	3W (G4 Lamp)

*Lamp Sold separately



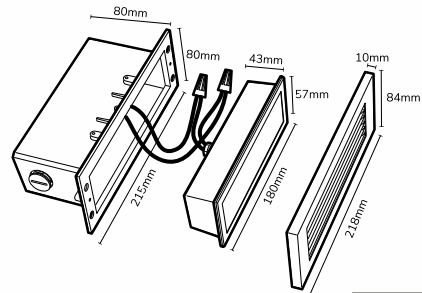
Product	Umbrella Path Light
Part No.	44006
Voltage	12V
Wattage	3W (G4 Lamp)

*Lamp Sold separately

LANDSCAPE LIGHTS

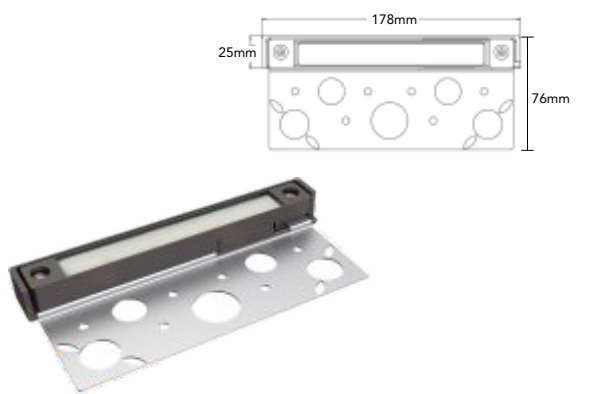


Landscape Light

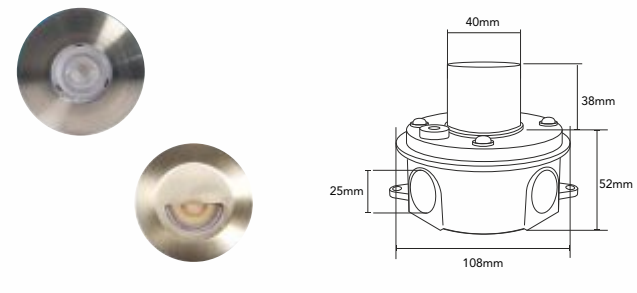


- Available finishes
- White
 - Black
 - Brushed Nickel

Product	LED Brick Light
Part No.	44007
Voltage	100~277V AC
Wattage	5W
CCT	3000K/4000K



Product	LED Hardscape Light
Part No.	44008
Voltage	12V
Wattage	2W
CCT	3000K



Product	Inground Light
Part No.	44009
Voltage	12V
Wattage	3W
CCT	3000K



Product	In-Ground Well Light
Part No.	44010
Voltage	12V
Wattage	7W (MR16 Lamp)

*Lamp Sold separately



- Available trim finishes
- Black
 - Brushed Nickel

Product	In-Ground Light
Part No.	44011
Voltage	12V
Wattage	3W



*Lamp Sold separately

Outdoor LED Bistro Lighting



Sockets / Length
24 / 15Mtr (E26 Base)
48 / 30Mtr (E26 Base)

Product	Suspended String Light
Part No.	44012 (15Mtr) 44013 (30Mtr)
Voltage	120V
Wattage	1.4W (S14 Filament Lamp)



*Lamp Sold separately



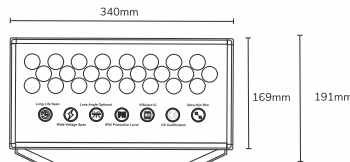
Product	LED Underwater Light
Part No.	44014
Voltage	12~24V
Wattage	7W (MR16 Lamp)
Dimensions	Trim 96mm, Housing 85mm



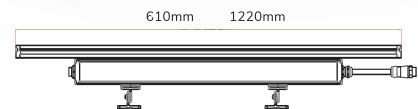
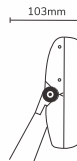
Product	RGB Underwater Light
Part No.	44015
Voltage	24V
Wattage	9W (3 x 3W)
Dimensions	95mm



NEW COLORBLASTER RGB WALL WASHER



Product	RGB Wall Washer
Part No.	44016
Voltage	100~277 VAC
Wattage	48W
Lumens	2300Lm



Product	RGB Linear Wall Washer
Part No.	44017
Voltage	100~277 VAC
Wattage	65W
Lumens	3400Lm



★ Landscape Transformer

Low Voltage Transformer



- Sliding lid design
- Built-in timer
- Built-in photocell
- 200W Multi-tap Low Voltage Transformer



- Multi-tap Output
- Durable & Weatherproof
- Automatic Circuit Breaker
- 150/300W Multi-tap Low Voltage Transformer

Product	Landscape Power Supply
Part No.	44018
Voltage	120VAC (Input) 12VAC (Output)
Wattage	200W

Product	Landscape Power Supply
Part No.	44019 (150W) 44020 (300W)
Voltage	120VAC (Input) 12V to 15VAC (Output)
Wattage	150W, 300W

Low Voltage Accessories & DMX Control

Part No.
44021



18AWG*2C Low Voltage Direct Burial Cable (Outdoor)
Length: 150Mtr

Part No.
44022



Outdoor rated GEL Marrattes

Part No.
44023



Plug-in Photocell

Part No.
44024



Part No.
44025

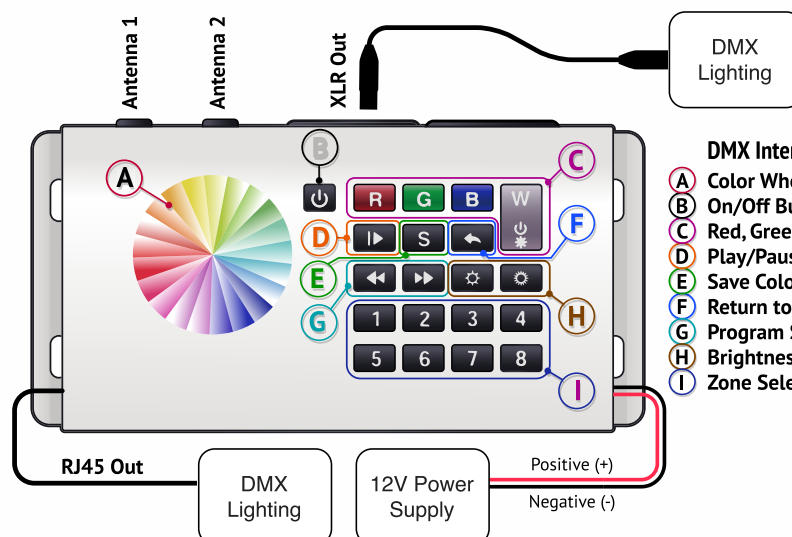


RGBW Multi-zone Wireless Remote
Available to control DMX interface

*Sold separately

FUNCTIONS

- 10 pre-programmed modes
- Controls up to 8 zones
- Choose colors on touch screen
- Group zone function
- 4 Channel RGBW compatible



DMX Interface Main Functions

- A** Color Wheel
- B** On/Off Button
- C** Red, Green, Blue, and White Control
- D** Play/Pause Button
- E** Save Color Button
- F** Return to Previous Program
- G** Program Speed Up and Down
- H** Brightness Control Up and Down
- I** Zone Selection



LED Bollards



TYPE - A



TYPE - B



TYPE - C



TYPE - D



TYPE - E



TYPE - F



TYPE - G



TYPE - H

TYPE	Part No	Selectable Wattage	Lumens	Voltage	Size	CCT	Color
A	93270	9W / 13W / 18W	1000 / 1500 / 2000	120~277V	8" X 41"	5000K	Black/Bronze
B	93330	9W / 13W / 18W	800 / 1200 / 1622	120~277V	8" X 41"	5000K	Black/Bronze
C	93290	9W / 13W / 18W	750 / 1100 / 1566	120~277V	8" X 41"	5000K	Black/Bronze
D	93310	9W / 13W / 18W	700 / 1000 / 1464	120~277V	8" X 41"	5000K	Black/Bronze
E	93750	9W / 13W / 18W	1000 / 1500 / 2000	120~277V	8" X 41"	5000K	Black/Bronze
F	93810	9W / 13W / 18W	750 / 1100 / 1566	120~277V	8" X 41"	5000K	Black/Bronze
G	93770	9W / 13W / 18W	750 / 1100 / 1566	120~277V	8" X 41"	5000K	Black/Bronze
H	93790	9W / 13W / 18W	700 / 1000 / 1464	120~277V	8" X 41"	5000K	Black/Bronze



LED TRACK LIGHTING

Page # 57 to 59

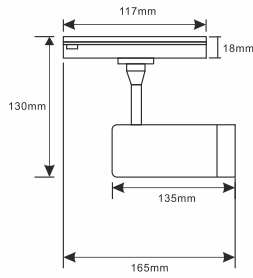
EMERGENCY LIGHTING

Page # 60 to 61



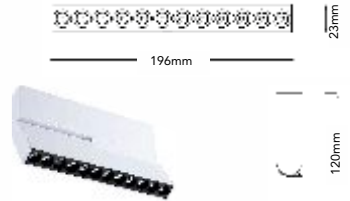
STAR LED

TRACK LIGHTS



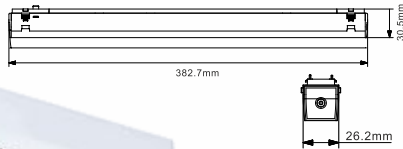
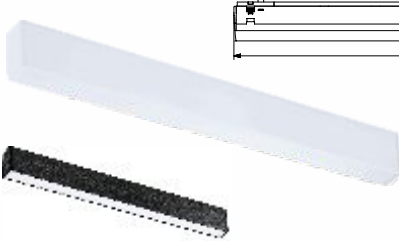
Product	LED Spot Head
Part No.	45001BK/WH 45002BK/WH
CCT	3000K 6000K
Wattage	15W
Voltage	48V
Lumens	1350Lm

Magnetic Track Heads

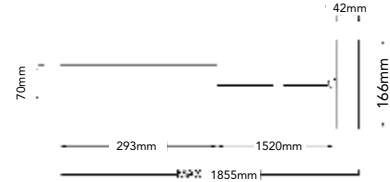


Folds a full 180° to adjust angle

Product	LED Folding Head
Part No.	45003BK/WH 45004BK/WH
CCT	3000K 6000K
Wattage	16W
Voltage	24V
Lumens	1175Lm

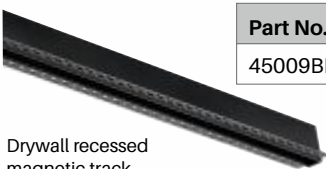


Product	LED Bar Head
Part No.	45005BK/WH 45006BK/WH
CCT	3000K 6000K
Wattage	18W
Voltage	48V
Lumens	1440Lm



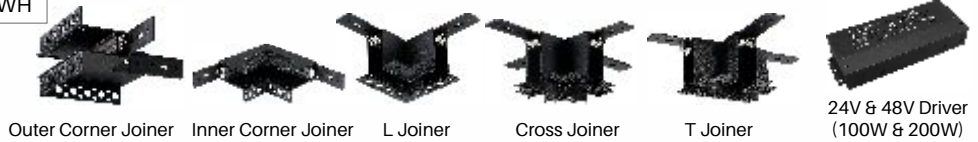
Height adjustable to maximum of 73"

Product	LED Pendant Head
Part No.	45007BK/WH 45008BK/WH
CCT	3000K 6000K
Wattage	20W
Voltage	24V
Lumens	1320Lm



Drywall recessed magnetic track (2Mtr length)

Part No.
45009BK/WH

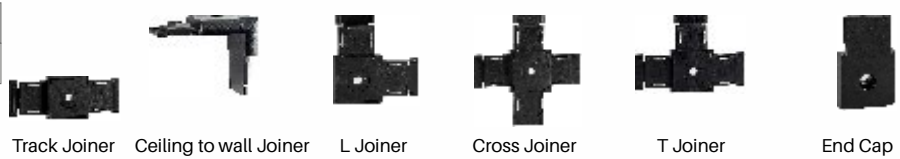


* Also available in white finish
* Accessories sold separately



Surface mount magnetic track (2Mtr length)

Part No.
45010BK/WH



TRACK LIGHTS



LED Track Heads



Product	LED Spot Head
Part No.	45011BK/WH 45012BK/WH
CCT	2200K 9500K
Wattage	40W
Voltage	120V~277V
Lumens	3600Lm



Product	LED Spot Head
Part No.	45013BK/WH
CCT Selectable	2700K/4100K/6500K
Wattage	25W
Voltage	120V~277V
Lumens	2250Lm



Product	LED Spot Head
Part No.	45014BK/WH/SN
CCT	3000K
Wattage	15W
Voltage	120V~277V
Lumens	1200Lm

GU10 HEAD



Product	GU10 Head
Part No.	45015BK/WH/SN
Lamp	GU10
Wattage	7W
Voltage	120V~277V
Lumens	550Lm

* Lamp sold separately

- Jewellery Showroom
- Clothing Showroom
- High End Residence
- Feature Wall
- Commercial Usage

High Performance Track Lights

2700K — 5000K Selectable



Track Heads

PAR20 HEAD



* Lamp sold separately

Product	PAR20 Head
Part No.	45020WH/BK/SN
Lamp	PAR20
Wattage	7W
Voltage	120V~277V
Lumens	550Lm

PAR30 HEAD



* Lamp sold separately

Product	PAR30 Head
Part No.	45030WH/BK/SN
Lamp	PAR30
Wattage	10W
Voltage	120V~277V
Lumens	800Lm

PAR38 HEAD



* Lamp sold separately

Product	PAR38 Head
Part No.	45038WH/BK/SN
Lamp	PAR38
Wattage	18W
Voltage	120V~277V
Lumens	1500Lm

TRACK



Product	Track Length
Part No.	45016BK/WH/SN
Length	8'

* Also available in Black and Satin finish
* Accessories sold separately



Track suspension kit 18"



Track suspension kit 24"



Track suspension kit 36"



Live end connector



Joiner connector



Ceiling mount Canopy



Cross Joiner



T Joiner



End cap



EMERGENCY LIGHTS



* Thermoplastic frame

Product	Exit Sign Combo
Part No.	46000
Heads	2 x 1.2W LED
Battery Backup	>90Mins
Voltage	120~347V
Mount	Ceiling / Wall



* Metal frame

Product	Exit Sign Combo
Part No.	46001
Heads	2 x 2W LED
Battery Backup	>120Mins
Voltage	120~347V
Mount	Ceiling / Wall



* Metal frame

Product	Running Man Exit Sign
Part No.	46003
Battery Backup	>120Mins
Voltage	120~347V
Mount	Ceiling / Wall



* Edge Lit

Product	Running Man Exit Sign
Part No.	46004
Battery Backup	>120Mins
Voltage	120~347V
Mount	Ceiling / Wall



* Thermoplastic frame

Product	Running Man Exit Sign
Part No.	46005
Battery Backup	>90Mins
Voltage	120~347V
Mount	Ceiling / Wall



Wet Location



46006

46007

* Fire resistant ABS Thermoplastic body

Product	Running Man Exit Sign
Part No.	46006 46007
Battery Backup	>120Mins
Voltage	120~347V
Mount	Ceiling / Wall





Remote Heads & Battery Packs



46008



46009

Product	Remote Heads
Part No.	46008 46009
Heads	7W LED
Voltage	6V~24V DC
Mount	Ceiling / Wall



Product	Battery Pack
Part No.	46010
Heads	2 x 2W LED
Battery Backup	>90Mins
Voltage	120~277V
Mount	Wall



Product	Battery Pack
Wattage (Upto)	144W 320W 500W
Part No.	46011 46012 46013
Heads	2 x 5W LED (24VDC)
Battery Backup	>120Mins
Voltage	120~347V
Mount	Wall



Product	Battery Pack
Wattage (Upto)	270W
Part No.	46014
Heads	2 x 5W LED (12VDC)
Battery Backup	>120Mins
Voltage	120~347V
Mount	Wall



Product	Battery Pack
Wattage (Upto)	72W 140W
Part No.	46015 46016
Heads (12V DC)	2 x 7W LED 2 x 5W LED
Battery Backup	>120Mins
Voltage	120~347V
Mount	Wall



Product	Battery Pack
Wattage (Upto)	36W
Part No.	46017
Heads	2 x 2W LED (6VDC)
Battery Backup	>120Mins
Voltage	120~347V
Mount	Wall



METALLIC/ NON-METALLIC BOXES

Page # 63 to 73



 **Metallic Boxes**



Ref. No. : 1104-LRW
2 1/2" Deep Device Rework Box with Plaster Ears & Clamps



Ref. No. : 1104-K
2 1/2" Deep Device Box with Knockouts



Ref. No. : 1102
2" Deep Device Box with Knockouts



Ref. No. : 1102-L
2" Deep Device Box



Ref. No. : 1102-LH
2" Deep Device Box with Knockouts with Clamps



Ref. No. : 1104-LA
2 1/2" Deep Device Box with Plaster Ears



Ref. No. : 1100-LLE
1 1/2" Deep Device Box with Clamps Less Ears



Ref. No. : 1104-LHA
2 1/2" Deep Device Box with Clamps



Ref. No. : 1104-LH
2 1/2" Deep Device Box with Clamps



Ref. No. : 1104-L
2 1/2" Deep Device Box with Plaster Ears



Ref. No. : 1100-L
1 1/2" Deep Shallow Device Box



Ref. No. : 1004-LH
3" Deep Device Box with Clamps



METALLIC BOXES



STAR LED Metallic Boxes



Ref. No. : 1304-LH
2 1/2" Deep "bubble"
Box with Clamps



Ref. No. : 1004-L
3" Deep Device Box
with Clamps



Ref. No. : 1504-LLE
2 1/2" Deep 1 Gang
Device Box with Clamps



Ref. No. : 777-LRB
2 1/4" Deep Single Gang
"Rework" Box with Cable
Clamps



Ref. No. : 2104-LLE
2 1/2" Deep 1 Gang
Device Box with Clamps



Ref. No. : 2104-LLE2
2 1/2" Deep 2 Gang
Device Box



Ref. No. : 2104-LLE3
2 1/2" Deep 3 Gang
Device Box



Ref. No. : 2104-LLE4
2 1/2" Deep 4 Gang
Device Box



Ref. No. : SBEX
1" Deep Box Extension



Ref. No. : 1141
1 1/2" Deep Non-gangable
Utility Box



Ref. No. : 1110
1 7/8" Deep Non-gangable
Utility Box with Knockouts



Ref. No. : 2020
1 7/8" Deep Non-gangable
Utility Box with Knockouts





Metallic Boxes



Ref. No. : 1110-R
1 7/8" Deep Non-gangable Utility Box Extension with Knockouts



Ref. No. : 3104-LHA
2 1/2" Deep Steel Stud "Bubble" with Clamps



Ref. No. : 3104-LSSAX
2 1/2" Deep Gangable Steel Stud "Bubble" Box with Clamps



Ref. No. : 3104-KSSX
2 1/2" Deep Gangable Steel Stud "Bubble" Box with Knockouts



Ref. No. : 3102-LSSAX
2" Deep Gangable Steel Stud "Bubble" Box with Clamps



Ref. No. : 3102-SSX
2" Deep Gangable Steel Stud "Bubble" Box with Knockouts



Ref. No. : 3104-LSSA1X-1
2 1/2" Deep Gangable Stud Box with Clamps



Ref. No. : 2104-LSSAX
2 1/2" Deep Non-gangable Steel Stud Box with Wraparound Bracket



Ref. No. : 2104-LSSA-2X
2 1/2" Deep Non-gangable 2 Gang Steel Stud Box with Wraparound Bracket



Ref. No. : 2104-LSSA-3X
2 1/2" Deep Non-gangable 3 Gang Steel Stud Box with Wraparound Bracket




Ref. No. : 3104-KSS1X-1
2 1/2" Deep Gangable Steel Stud "Bubble" Box with Knockouts



Ref. No. : 52171-KSSX-1
4" Square Steel Stud Box with Knockouts & Bracket



METALLIC BOXES

 **Metallic Boxes**



Ref. No. : 52151-KSSX
4" Square Steel Stud Shallow Junction Box with Knockouts



Ref. No. : 52171-KSSX
4" Square Steel Stud Box with Knockouts



Ref. No. : 72171-KSSX
4 11/16" Square Steel Stud Junction Box with Knockouts



Ref. No. : 54151-LSSAX
4" Diameter Steel Stud Box Octagonal Box with Clamps



Ref. No. : 54151-KSSX
4" Diameter Steel Stud Octagonal Box with Knockouts



Ref. No. : 54171-KSSX
4" Diameter Steel Stud Octagonal Box with Knockouts & Bracket



Ref. No. : 3004-LSSAX
3" Deep Steel Studs Gangable Device Box



Ref. No. : 3004-LSSAX-1X
3" Deep Steel Studs Gangable Device Box



Ref. No. : MBS-1K
2 1/2" Deep Single Gang Box with Knockouts



Ref. No. : MBS-2K
2 Gang Masonry Box, 2 1/2" Deep



Ref. No. : MBS-3K
3 Gang Masonry Box, 2 1/2" Deep



Ref. No. : MBS-4K
4 Gang Masonry Box, 2 1/2" Deep

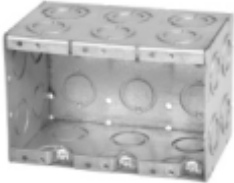




Ref. No. : MBD-1K
3 1/2" Deep 1 Gang Box with Knockouts



Ref. No. : MBD-2K
2 Gang Masonry Box, 3 1/2" Deep



Ref. No. : MBD-3K
3 Gang Masonry Box, 3 1/2" Deep



Ref. No. : MBD-4K
4 Gang Masonry Box, 3 1/2" Deep



Ref. No. : 54151-L
4" Diameter Octagonal Box with Clamps



Ref. No. : 54151-LB
4" Diameter Octagonal Box with Clamps & Bracket



Ref. No. : 54151-LA
4" Diameter Octagonal Box with Clamps



Ref. No. : 54151-K
4" Diameter Octagonal Box with 1/2" & 3/4" Knockouts



Ref. No. : 54171-LB
4" Diameter Octagon Box with Clamps, Knockouts & Bracket



Ref. No. : 56111
4" Diameter Octagonal "Pancake" Box



Ref. No. : OBEX
1/2" Deep Extension Ring 5 CU. In.



Ref. No. : 54171-L
4" Diameter Octagonal Box with Clamps



METALLIC BOXES



STAR LED Metallic Boxes



Ref. No. : 54171-K
4" Diameter
Octagonal Box, 1/2" &
3/4" Knockouts



Ref. No. : 55151-K
4" Diameter Octagonal
Box Extension with 1/2"
& 3/4" Knock-outs



Ref. No. : 72171-K
4 11/16" Square Wide
Junction Box with
Knockouts



Ref. No. : 72171-1
4 11/16" Square Junction
Box with 1" Knockouts



Ref. No. : 52171-K
4" Square Junction Box
with Knockouts



Ref. No. : 52151-K
4" Square Shallow
Junction Box with
Knockouts



Ref. No. : 53151-K
4" Square Box
Extension Ring With
Knockouts



Ref. No. : 53171-K
4" Square Box
Extension With
Knockouts



Ref. No. : 73151-K
4 11/16" Square Box
Extension Ring with
Knockouts



Ref. No. : 73171-K
4 11/16" Square Box
Extension with Knockouts



Ref. No. : 53171-ER
4" Square Box Extension
Ring with Knockouts



Ref. No. : 1204-1-HV
2 1/2" Deep Box with Ears &
Knockouts, Gangable -
347v





 **Metallic Covers**



Ref. No. : 54C6
4" Round Cover



Ref. No. : 54C1
4" Round Cover



Ref. No. : 8376
4" Square Cover -
Decorator/GFCI



Ref. No. : 8361
4" Square Cover - Single
Toggle



Ref. No. : 8365
4" Square Cover - Single
Duplex Outlet



Ref. No. : 11C10-HV
347V- 2 3/8" Wide Utility Box
Cover



Ref. No. : 11C5-HV
347V- 2 3/8" Wide Utility
Box Cover



Ref. No. : 11C4-HV
347V- 2 3/8" Wide Utility Box
Cover



Ref. No. : 52C14
4" Square Cover



Ref. No. : 52C1
4" Square Cover



Ref. No. : 52C6
4" Square Cover



Ref. No. : 52C17
4" Square - 2 Device



METALLIC BOX COVERS



STAR LED Metallic Covers



Ref. No. : 72C1
4 11/16" Square Cover



Ref. No. : 72C6
4 11/16" Square Cover



Ref. No. : 20C5
2 1/8" Wide - Single Switch



Ref. No. : 11C5
2 3/8" Wide - Single Switch



Ref. No. : 11C1
2 3/8" Wide - Duplex Outlet



Ref. No. : 11C10
2 3/8" Wide



Ref. No. : 66
Cable Protector Plate 1
1/2" x 3"

STAR LED Box Connectors



Ref. No. : L16
1-Screw 3/8" Box
Connector - Fits 1/2" KO



Ref. No. : L17
1-Screw 1/2" Box Connector
- Fits 1/2" KO



Ref. No. : CI-806
2-Screw 3/4" Box Connector
Fits 3/4" KO



Ref. No. : CI-2175
3/8" Duplex Box Connector -
Fits 1/2" KO



Ref. No. : CI-808
2-Screw 1" Box Connector Fits
1" KO





Ref. No. : L18
3/4" 1 screw Box Connector
(L18)



Box Connectors

Ref. No. : L19
1" 1 screw Box Connector
(L19)



Ref. No. : 4004
1/2" Nylon Snap-In Box
Connector - Fits 1/2" KO



Ref. No. : CI2010
3/8" 90° Box Connector -
Fits 1/2" KO



Ref. No. : 4004-RED
3/4" Nylon Snap-In Box
Connector - Fits 3/4" KO

Vapour Barriers



Ref. No. : VB1
Vapour Barrier 1 Gang



Ref. No. : VB2
Vapour Barrier 2 Gang



Ref. No. : VB3
Vapour Barrier 3 Gang



Ref. No. : VB4
Vapour Barrier 4 Gang



Ref. No. : VB-54
Vapour Barrier Octagon



Ref. No. : SA-58
Vapour Barrier Pot Light



Ref. No. : VB-6-FAN-POLY
Vapour Barrier for
Bathroom Fan



NON-METALLIC BOXES



Non-Metallic Boxes



Ref. No. : 20471
Non-metallic Device Box, 1-gang



Ref. No. : 20481
Non-metallic Device Box, 1-gang with Vapour Barrier



Ref. No. : 20472
Non-metallic Device Box, 2-gang



Ref. No. : 20482
Non-metallic Device Box, 2-gang with Vapour Barrier



Ref. No. : 20473
Non-metallic Device Box, 3-gang



Ref. No. : 20483
Non-metallic Device Box, 3-gang with Vapour Barrier



Ref. No. : 20475
Non-metallic Octagon Box



Ref. No. : 20485
Non-metallic Octagon Box with Vapour Barrier



Ref. No. : 20484
Non-metallic Device Box, 4-gang with Vapour Barrier



Ref. No. : 20486
Non-metallic 4 11/16 Square Box with Vapour Barrier



Ref. No. : 20487
1-Gang 1/2 in. Weatherproof PVC FS Box



Ref. No. : 20488
2-Gang 1 x 1/2 in. Weatherproof PVC FS Box





Ref. No. : 23015
IUC-1V Single Gang Heavy Duty
Outdoor Weatherproof Cover



Weatherproof Boxes

Ref. No. : 23016
IUC-2V Double Gang Heavy
Duty Outdoor Weatherproof
Cover



Ref. No. : 18025
Weatherproof Metal FS Box



Ref. No. : 20065
Weatherproof Round Box



Ref. No. : 20075
Weatherproof Round Box
with Cover



Ref. No. : 20100
Weatherproof Round Blank
Cover



Ref. No. : 28005
Round Cover 1 Hole Grey



Round Covers

Ref. No. : 28025
Round Cover 3 Holes Grey



Ref. No. : 28010
Round Cover 1 Hole Black



Ref. No. : 28030
Round Cover 3 Holes Black



Ref. No. : 28012
Round Cover 1 Hole White



Ref. No. : 28032
Round Cover 3 Holes White



WIRING DEVICES & ACCESSORIES

Page # 75 to 79



Wiring Devices



Ref. No. : 45111BK/WH/IV
Decora 15A TR Receptacle



Ref. No. : 45112/BK/WH/IV
Decora 20A TR Receptacle



Ref. No. : 45113/BK/WH/IV
Decora 15A Single Pole Switch



Ref. No. : 45114/BK/WH/IV
Decora 15A 3 Way Switch



Ref. No. : 45115/BK/WH/IV
Decora 15A 4 Way Switch



Ref. No. : 45116/BK/WH
GFCI Duplex Outlet Tamper Resistant & Self Test 15A



Ref. No. : 45117/BK/WH
GFCI Duplex Outlet Tamper Resistant & Self Test 20A



Ref. No. : 45118/BK/WH
Pre-set Slide Dimmer Switch Single Pole or 3 way



Ref. No. : 45119/BK/WH
15A Duplex USB Receptacle Type A only



Ref. No. : 45120/BK/WH
15A Duplex USB Receptacle Type A&C



Ref. No. : 40280
Motion Sensor Switch



Ref. No. : 40093
Pre-set Timer Switch



WIRING DEVICES

Plugs & Connectors



Ref. No. : 40092
Digital Wall Timer Switch



Ref. No. : 45167
50A-250V Heavy Duty
Flush Mount Outlet



Ref. No. : 45166
30A-250V Heavy Duty
Flush Mount Outlet



Ref. No. : 45125
30A Dryer Outlet with 4 11/16"
Cover Plate



Ref. No. : 45126
50A Range Outlet with
4 11/16" Cover Plate



Ref. No. : 46050
Keyless Ceiling Lampholder



Ref. No. : 46053
Pig-Tail Socket



Ref. No. : 45400/BK/YL
15A-125V Female
Connector



Ref. No. : 45411
15A-125V Male
Connector



Ref. No. : 45162
30A/50A-250V Universal
Angle Plug



Ref. No. : 45168
30A-250V Flush Mount
Outlet



Ref. No. : 45169
50A-250V Flush Mount
Outlet





Wall Plates



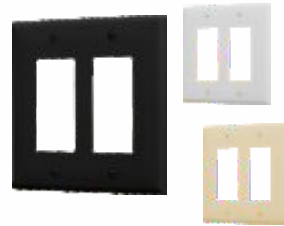
Ref. No. : 45303
Single Gang Blank Decora Plate



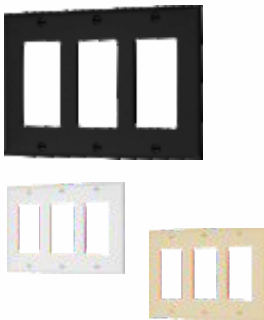
Ref. No. : 45304
Double Gang Blank Decora Plate



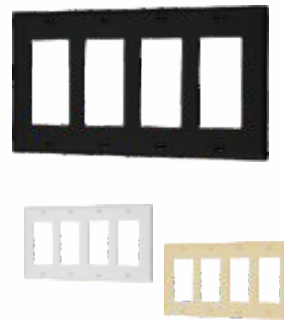
Ref. No. : 45121/BK/WH/IV
Single Gang Decora Plate with Screws



Ref. No. : 45122/BK/WH/IV
Double Gang Decora Plate with Screws



Ref. No. : 45123/BK/WH/IV
Triple Gang Decora Plate with Screws



Ref. No. : 45124/BK/WH/IV
Four Gang Decora Plate with Screws



Ref. No. : 45127/BK/WH
Single Gang Decora Plate Screwless



Ref. No. : 45128/BK/WH
Double Gang Decora Plate Screwless



Ref. No. : 45129/BK/WH
Triple Gang Decora Plate Screwless



Ref. No. : 45130/BK/WH
Four Gang Decora Plate Screwless



WIRING DEVICES



Ref. No. : 45131
 Non-Fused AC Disconnect
 Safety Switch 60 A, 240
 VAC (PULL-OUT)

Accessories

CHIME KIT



ELECTRICAL TAPES



BLACK
 (Pack of 10)



WHITE
 (Pack of 10)



RED
 (Pack of 10)



GREEN
 (Pack of 10)



YELLOW
 (Pack of 10)

TWIST-ON CONNECTORS (Pack of 500)



ORANGE
 (Wire Range #22-#14)



YELLOW
 (Wire Range #22-#14)



RED
 (Wire Range #18-#10)

WING TWIST CONNECTORS (Pack of 500)



BLUE
 (Wire Range #14-#6)



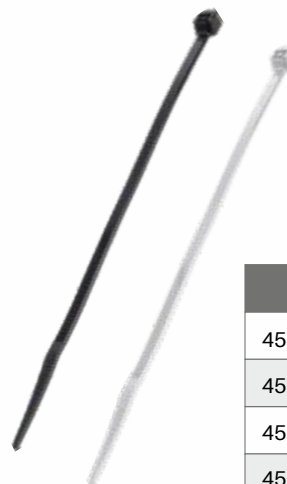
RED
 (Wire Range #18-#8)

WING TWIST CONNECTORS Wire Range: #22-#8

Ref. No. :
 12-1H-100 (Pack of 100)
 12-1H-500 (Pack of 500)
 12-1H-30000 (Barrel of 30000)



PLASTIC CABLE TIES



Part No.	SIZE	PACK QTY.
45132BK/WH	7"	1000
45133BK/WH	11"	100/500
45134BK/WH	14"	100/500
45135BK/WH	24"	10
45136BK/WH	36"	10



Staples



Ref. No. : S1 STAPLES

Pale Qty: 1500



Ref. No. : S2 STAPLES

Pale Qty: 500



Ref. No. : S3 STAPLES

Pale Qty: 400



Ref. No. : S4 STAPLES

Pale Qty: 100



Ref. No. : 1544P

Plastic Nail on Staples
Pale Qty: 500



Ref. No. : 1544M

Metal Nail on Staples
Pale Qty: 500

SMOKE ALARMS HEATERS BATH FANS & EV CHARGER

Page # 81 to 83



 **Smoke Alarms**



Ref. No. : 89120B
Smoke Alarm with Battery Backup
Hard Wired



Ref. No. : 89120SCB
Smoke & Carbon Alarm with
Battery Backup
Hard Wired



Ref. No. : 87016B
Smoke & Photoelectric Alarm
with Battery Backup
Hard Wired



Ref. No. : 87016SCB
Smoke, Carbon & Photoelectric
Alarm with Battery Backup
Hard Wired



Ref. No. : 870RF
Smart Relay for Furnace



Ref. No. : 870RS
Smart Relay for Sprinkler



Ref. No. : 870SA
Weatherproof Red Strobe



Ref. No. : 870MK
Mounting Kit for Strobe Light



BASE BOARD HEATERS



STAR LED Heaters



Standard Watt Density Models 275W/ft.



Wall Thermostat
BBHWT



Built-in Thermostat
BBHBT

Watts	Watts 240/208V	PART NO.			Length (in)
		120V	208V	240/208V	
300	300/225	BBH300	BBH308	BBH340	22 5/16
500	500/375	BBH500	BBH508	BBH540	27 3/16
750	750/563	BBH750	BBH758	BBH740	37 3/16
1000	1000/750	BBH1000	BBH1008	BBH1040	47 1/2
1250	1250/938	BBH1250	BBH1258	BBH1240	57
1500	1500/1125	BBH1500	BBH1508	BBH1540	65 11/16
1750	1750/1313	-	BBH1758	BBH1740	75
2000	2000/1500	-	BBH2008	BBH2040	83 13/16
2250	2250/1688	-	BBH2258	BBH2240	92
2500	2500/1875	-	BBH2508	BBH2540	101 13/16



FAN FORCE HEATERS

Watts	Volts	Part No.
500	120	FFH500
750	120	FFH750
1000	120	FFH1000
1250	120	FFH1250
1500	120	FFH1500
2000	208	FFH2000
500/375	240/208	FFH508
750/563	240/208	FFH758
1000/750	240/208	FFH1008
1250/938	240/208	FFH1258
1500/1125	240/208	FFH1508
2000/1500	240/208	FFH2008




Renovation


Part No.	10080	10110
CFM	80	110
Watt	28	32
Duct Size	4"	4"
Sones	0.7	1

New Construction


Part No.	10090	10110N
CFM	90	110
Watt	26	31
Duct Size	4"	4"
Sones	0.5	0.8

Slim Profile


Part No.	10581
Selectable CFM	50/80/100
Watt	6/9/14
Duct Size	4"
Sones	0.6/0.8/1.0

EV Charging Station

PLUG TYPE

NEMA 14-50 plug for easy installation



INCLUDED ACCESSORY

EV Charger plug and cable holster. This is a two piece accessory, both pieces need to be installed.





Plug Socket



Cable Holder

EV Chargers Specifications

- 208-240Vac 60 Hz
- Maximum input Amperage: 40A
- Max output Amperage: 40A
- Max output power: 9.6kW
- Level 2 Charger
- Residential application
- **Indoor & Outdoor use**

Electrical Characteristics

Applications



LED MIRRORS LIGHT BULBS MOUNTING BRACKETS

Page # 85 to 87



Part No. : 40036
36" Round LED Mirror
3CCT Edgelit



Part No. : 42228
W22" x H28" Oval LED Mirror
3CCT with De-fogger Edgelit



Part No. : 40024
24" Round LED Mirror
3CCT with De-fogger
Backlit



Part No. : 42032
W20" x H32" Arched LED
Mirror 3CCT with De-fogger
& Shelf Edgelit



Part No. : 43636
W36" x H36" LED
Mirror 3CCT Edgelit

Part No. : 43642
W36" x H42" LED
Mirror 3CCT Edgelit



Part No. : 43224
W32" x H24" LED Mirror
3CCT with De-fogger Backlit



Part No. : 41960
W19" x H60" Full
Length LED Mirror
3CCT Side Edgelit



Part No. : 44842
W48" x H42" LED Mirror
3CCT Edgelit

Part No. : 46036
W60" x H36" LED Mirror
3CCT Edgelit



LED LAMPS



STAR LED LED Lamps



GU10-3K/5K



BR20-3K/5K



BR30-3K/5K



BR40-3K/5K



A19-3K/5K



PAR20-3K/5K



PAR30-3K/5K



PAR38-3K/5K



E12 CANDLE-3K/5K



E26 ST17-3K/5K



G9-3K/5K



G4-3K/5K



RS7-3K/5K

LED TUBE LIGHTS



PL LAMP 4 PIN
-3K/4K



T5 4'-3K/5K

T8 4'



T8 8' SINGLE PIN
-3K/5K

T8 8' DOUBLE PIN
-3K/5K





STAR LED Mounting Brackets



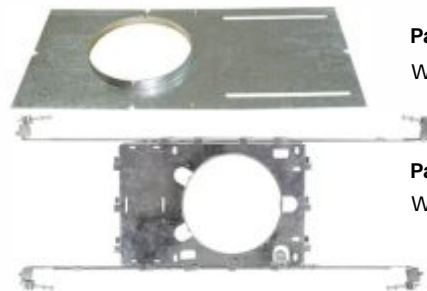
Part No. : 50002
Mounting Bracket for
2" Downlights



Part No. : 50003
Mounting Bracket for 3"
Downlight



Part No. : 50035
Mounting Bracket for
3 1/2" Combo
Downlight



Part No. : 50004
Without Adjustable Legs
Part No. : 50004L
With Adjustable Legs



Mounting Bracket for 4"
Downlight



Part No. : 50006
Mounting Bracket for
6" Downlight



Part No. : 50408
New Construction Housing
for 4" Retrofit Downlight
IC & Non-IC



Part No. : 50509
New Construction
Housing for 5" Retrofit
Downlight



Part No. : 50301
New Construction Housing
for 3" Retrofit Downlight
Non-IC



Part No. : 50405
Re-Model Housing for 4"
Retrofit Downlight



PROGRAMMABLE LED OUTDOOR LIGHTS

Page # 89 to 92

TOOLS & ACCESSORIES HAND DRYERS

Page # 93 to 98



STAR LED

HOLIDAY LIGHTS



RGB Trilights

150ft. Multichannel Programmable Outdoor Lights

Choose from 75 scene modes and 16 million colors to light up your home with RGBWWIC outdoor lights for every occasion.



Download our app today



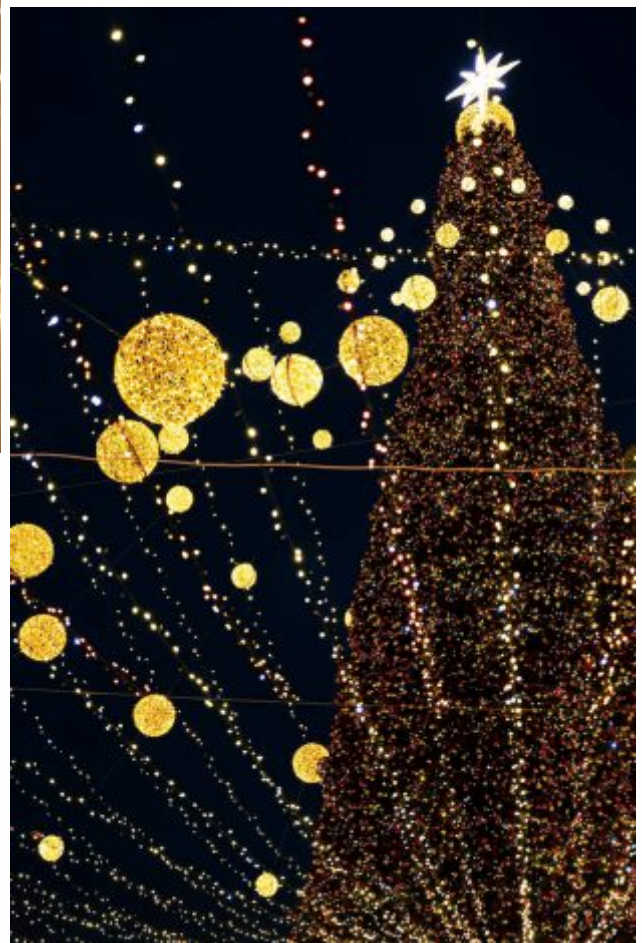
COMMERCIAL PROGRAMMABLE FACADE SYSTEM



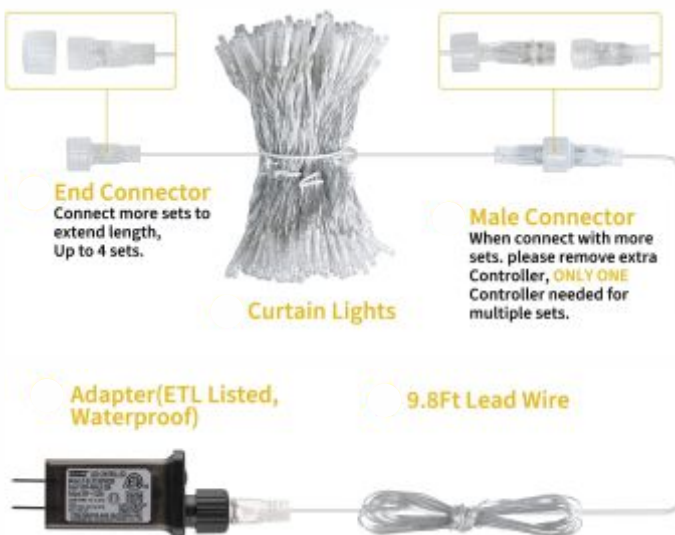
We provide consultancy for your upcoming project.



STAR LED Curtain Lights



Wedding curtain lights-2700K/5000K/RGB

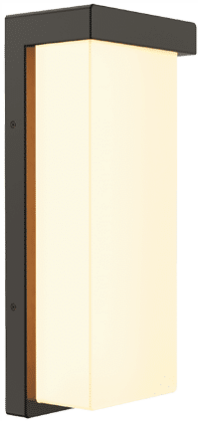


300 LED Curtain String Lights, 9.8 FT Hanging Fairy Lights, Connectable Waterproof Window Lights for Bedroom Backdrop Wedding Outdoor Christmas Decoration

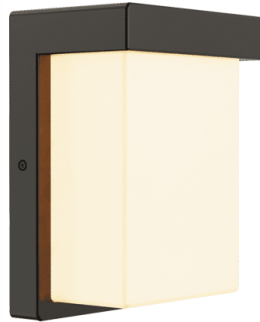
OUTDOOR WALL LIGHTS



Outdoor Wall Lights



Part No. : 51001



Part No. : 51002



Part No. : 51003



Part No. : 51004



Part No. : 51005



Part No. : 51006



Part No. : 51007



Part No. : 51008



Part No. : 51009



Part No. : 51010



Heavy-Duty Wire Stripper Cutter Crimper Multi Tool, 8-20 AWG



Heavy-Duty Wire Stripper 8-20 AWG



Wire Stripper Cutter 8-20 AWG



High Leverage Cable Cutter with Stripping



Forged Steel Wire Crimper, Cutter, Stripper



Diagonal Cutting Pliers, High-Leverage, Stripping, 8-Inch



Pump Pliers, 12-Inch



Vertical Wire Stripper and Cutter, Self-Adjusting



Wire Stripper Cutter 16-26 AWG Stranded



Pliers, All-Purpose Needle Nose, Spring Loaded, Cuts, Strips, 8.5-Inch



Dual NMD-90 Cable Stripper Cutter



Multi Tool, 6-in-1 Multi-Purpose Stripper, Crimper, Wire Cutter

TEST/BLADES/LEVELS/CUTTERS



Tools



Premium Meter Electrical Test Kit



Premium Meter Electrical Test Kit



Premium Meter Electrical Test Kit



Digital Multimeter, TRMS Auto-Ranging, 1000V, Temp, Low Impedance



Non-Contact Voltage & GFCI Receptacle Premium Test Kit



Premium Meter Electrical Test Kit



GFCI Receptacle Tester with LCD



Electronic Stud Finder with Cross-Line Lasers



Utility Knife



Electrician's Knife



Drywall Saw



Hack Saw



Laser Meter



25' Measuring Tape



Torpedo Leveler



Magnetic Leveler



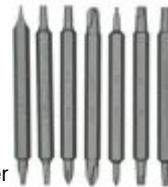
Insulated Precision Screwdriver, #0 Phillips, 3-Inch Shank



Insulated Precision Screwdriver, 1/8-Inch Slotted, 4-Inch Shank



Insulated Precision Screwdriver, 3/32-Inch Slotted, 3-Inch Shank



Multi-use Screw Driver



Bi-Metal Hole Saw, 1-3/4-Inch



Bi-Metal Hole Saw, 1-3/8-Inch



Bi-Metal Hole Saw, 2-Inch



Bi-Metal Hole Saw, 4-1/2-Inch



Hole Saw Arbor With Pins, 7_16-Inch



Hole Saw Arbor with Adapter, 3_8-Inch



Regular-Point Drill-Bit Set, 29-Piece



Knit Dipped Gloves, Cut Level A1, Touchscreen, Small, 2-Pair



Tool Kit, 12-Piece



High Flex Polyester Fish Tape, 150-Foot



Non-Sparking Hammer



Claw Hammer

CABLE CUTTER/STEP DRILL/HAND WRAP/SAFTY



Tools



Heavy Duty Ratcheting Cutter



PVC Hand Cutter



Wrench



Tek Wire Cutter



Long Nose Cable Cutter



Step Drill Bit, Quick Release, Double Spiral Flute, 1/4 to 3/4-Inch



Step Drill Bit, Quick Release, Double Spiral Flute, 1/8 to 1/2-Inch



Step Drill Bit, Quick Release, Double Spiral Flute, 3/16 to 7/8-Inch



Step Drill Bit, Quick Release, Double Spiral Flute, 7/8 to 1-1/8-Inch



Step Drill Bit, Quick Release, Double Spiral Flute, 7/8 to 1-3/8-Inch



Bundle Wrap - 80 gauge, 5" x 1,000'



Stretch Wrap - 80 gauge, 18" x 1,500'



Industrial Hand Soap



Paper Roll Towels - 7.7" x 700'



General Purpose Hi-Vis Safety Vests



Hard Hat, Non-Vented, Cap Style, Yellow



Standard H100 Safety Harness



Class ABC Fire Extinguishers



Precision ground cutting edge for fast cutting of clean holes in wood

Burr-free lead screw for easy starts and pull-through without material build-up.



Length: 7-1/2" / 190mm		
Item#	Diameter	
92703	3/8"	9.5mm
92704	7/16"	11mm
92705	1/2"	13mm
92706	9/16"	14mm
92707	5/8"	16mm
92708	11/16"	17.5mm
92709	3/4"	19mm
92710	13/16"	21mm
92711	7/8"	22mm
92712	15/16"	24mm
92713	1"	25mm
92715	1-1/8"	29mm
92717	1-1/4"	32mm
92718	1-3/8"	35mm
92719	1-1/2"	38mm
92390	Resharpening File	

Length: 18" / 457mm		
Item#	Diameter	
92803	3/8"	9.5mm
92804	7/16"	11mm
92805	1/2"	13mm
92806	9/16"	14mm
92807	5/8"	16mm
92808	11/16"	17.5mm
92809	3/4"	19mm
92810	13/16"	21mm
92811	7/8"	22mm
92812	15/16"	24mm
92813	1"	25mm
92814	1-1/16"	27mm
92815	1-1/8"	29mm
92817	1-1/4"	32mm
92818	1-3/8"	35mm
92819	1-1/2"	38mm
92390	Resharpening File	



HAND DRYERS



STAR LED Hand Dryers

LACOMBE SERIES

Adjustable Output Airflow Temperature



Available in

- White
- Black
- Stainless Steel
- Chrome

CAMROSE SERIES

Great Platform for Marketing



Available in

- White
- Black
- Stainless Steel
- Chrome

KEN SERIES

Dynamic Changeable LED Coloured Lighting

Integrated Infrared Dispenser



Available in

- White
- Black
- Stainless Steel
- Chrome

RAI SERIES

UV Sterilisation & HEPA Filter



Available in

- White
- Stainless Steel
- Chrome

NAGI SERIES

Dynamic Changeable LED Coloured Lighting

Integrated Infrared Sanitiser Dispenser



Available in

- White
- Black
- Stainless Steel
- Chrome

AHUJA SERIES

Hand & Hair Dryer



Available in

- White
- Chrome

Series	Watts	Volts Hz	Air Velocity LFM	Air Volume CFM	Noise dB	Dimensions (W x H x D) inches
LACOMBE	1450	115-230, 50-60	19000	100	78	9.25 x 11.02 x 6.69
CAMROSE	1450	115-230, 50-60	19000	100	78	9.25 x 11.02 x 6.69
KEN	1450	115-230, 50-60	8600	150	55	8.77 x 15.11 x 4.13
RAI	1650	110-120, 60	14000	200	70	11.73 x 26.33 x 7.24
NAGI	1000	115-230, 50-60	20000	100	70	12.00 x 15.12 x 5.31
AHUJA	2500	110-120, 220-240	16000	202	70	11.00 x 9.00 x 8.00

*Actual product may vary



One Stop Solution

for All your **LED** Lighting Requirements!



RESIDENTIAL
LED LIGHTING

EMERGENCY
LIGHTING

STRIP/ROPE LED LIGHTING
CHANNELS & DRIVERS

LANDSCAPE
LED LIGHTING

LED TRACK
LIGHTING

COMMERCIAL
LED LIGHTING

METALLIC/
NON-METALLIC BOXES

WIRING DEVICES
& ACCESSORIES

SMOKE ALARMS HEATERS
BATH FANS & EV CHARGER

LED MIRRORS LIGHT BULBS
MOUNTING BRACKETS

PROGRAMMABLE
LED OUTDOOR LIGHTS


TOOLS & ACCESSORIES
HAND DRYERS





Head office:

7808 132 St. #101, Surrey, BC V3W 4N1

 info@starled.ca

 (604) 593-4400

 www.starled.ca